

Appendix C: Example Scenarios for Restore Filter using AhsayOBM

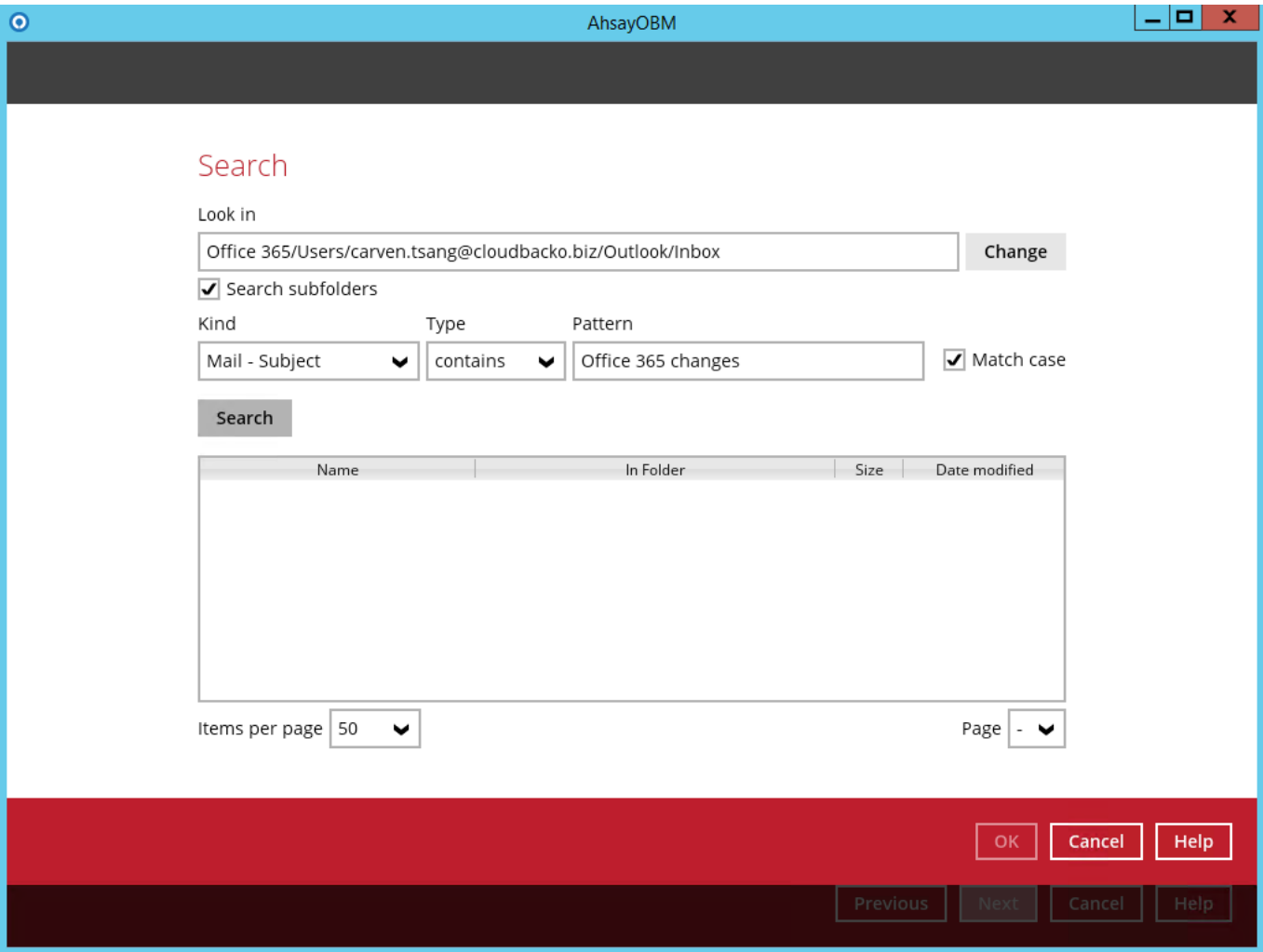
Scenarios No. 1: Items from Users

Example No. 1

Restore filter setting from an Office 365 user account’s outlook inbox

Location:	Office 365/carven.tsang@clouddbacko.biz/Outlook/Inbox
Search subfolders:	True
Kind:	Mail - Subject
Type:	Contains
Pattern:	Office 365 changes
Match Case:	True

Follow the step-by-step procedure indicated on [Restore Filter with AhsayOBM](#).



AhsayOBM

Search

Look in

Office 365/Users/carven.tsang@cloudbacko.biz/Outlook/Inbox

Change

☒ Search subfolders

Kind

Mail - Subject

Type

contains

Pattern

Office 365 changes

☒ Match case

Searching ...

Stop

Name	In Folder	Size	Date modified
------	-----------	------	---------------

Items per page

50

Page

-

OK

Cancel

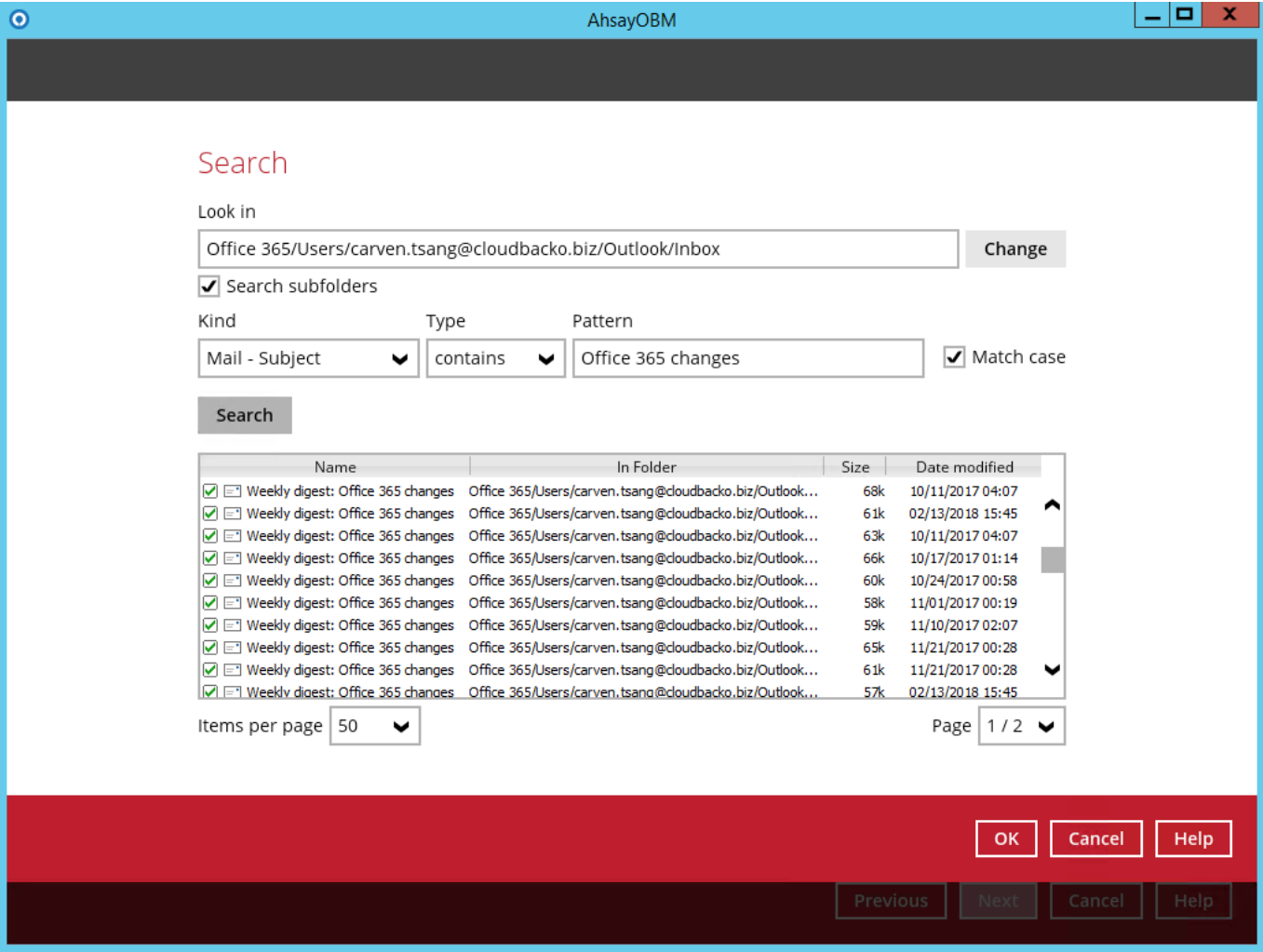
Help

Previous

Next

Cancel

Help



Explanation:

All mails under Office 365/Users/carven.tsang@cloudbacko.biz/Outlook/Inbox that has a subject and contains 'Office 365 changes' with match case set to true will be included upon performing search.

As you can see on the screen shot above, the result panel contains the Name of the mail, Directory of the mails which are indicated In-Folder column, Size of each mails, and Date Modified.

The restore filter setting includes the Search subfolder and Match case set to true. Meaning, the filter will include all available subfolders in the Outlook Inbox upon searching. And it will strictly search only the specified pattern and case which is the 'Office 365 changes'.

Example No. 2

Location:	Office 365/carven.tsang@clouddbaco.biz/OneDrive
Search subfolders:	True
Kind:	Files and Folders
Type:	Exact
Pattern:	testBigFile-backup
Match Case:	True

Follow the step-by-step procedure indicated on [Restore Filter with AhsayOBM](#).

AhsayOBM

Search

Look in

Office 365/Users/carven.tsang@cloudbacko.biz/OneDrive

Change

☒ Search subfolders

Kind

Files and Folders

Type

exact

Pattern

testBigFile-backup

☒ Match case

Search

Name	In Folder	Size	Date modified
------	-----------	------	---------------

Items per page

50

Page

-

OKCancelHelp

PreviousNextCancelHelp

AhsayOBM

Search

Look in

Office 365/Users/carven.tsang@cloudbacko.biz/OneDrive

Change

☒ Search subfolders

Kind

Files and Folders

Type

exact

Pattern

testBigFile-backup

☒ Match case

Searching ...

Stop

Name	In Folder	Size	Date modified
------	-----------	------	---------------

Items per page 50

Page -

OKCancelHelp

PreviousNextCancelHelp

AhsayOBM

Search

Look in

Office 365/Users/carven.tsang@cloudbacko.biz/OneDrive

Change

☒ Search subfolders

Kind

Files and Folders

Type

exact

Pattern

testBigFile-backup

☒ Match case

Search

Name	In Folder	Size	Date modified
<input checked="" type="checkbox"/> testBigFile-backup	Office 365/Users/carven.tsang@cloudbacko.biz/OneDrive		

Items per page 50

Page 1 / 1

OKCancelHelp

PreviousNextCancelHelp

Explanation:

All files and folders under Office 365/Users/carven.tsang@cloudbacko.biz/OneDrive that has the exact pattern of 'testBigFile-backup' with match case set to true will be included upon performing search.

As you can see on the screen shot above, the result panel contains the Name of the mail, Directory of the mails which are indicated In-Folder column, Size of each mails, and Date Modified.

The restore filter setting includes the Search subfolder and Match case set to true. Meaning, the filter will include all available subfolders in OneDrive upon searching. And it will strictly search only the specified pattern and case which is the 'testBigFile-backup'.

Example No. 3

Restore filter setting from an Office 365 user account's personal site

Location:	Office 365/carven.tsang@clouddbacko.biz/Personal Site
Search subfolders:	True
Kind:	Files and Folders
Type:	contains
Pattern:	ppp
Match Case:	True

Follow the step-by-step procedure indicated on [Restore Filter with AhsayOBM](#).

AhsayOBM

Search

Look in

Office 365/Users/carven.tsang@cloudbacko.biz/Personal Site

Change

☒ Search subfolders

Kind

Files and Folders

Type

contains

Pattern

ppp

☒ Match case

Search

Name	In Folder	Size	Date modified
------	-----------	------	---------------

Items per page50

Page-

OKCancelHelp

PreviousNextCancelHelp

AhsayOBM

Search

Look in

Office 365/Users/carven.tsang@cloudbacko.biz/Personal Site

Change

☒ Search subfolders

Kind

Files and Folders

Type

contains

Pattern

ppp

☒ Match case

Searching ...

Stop

Name	In Folder	Size	Date modified
------	-----------	------	---------------

Items per page

50

Page

-

OK

Cancel

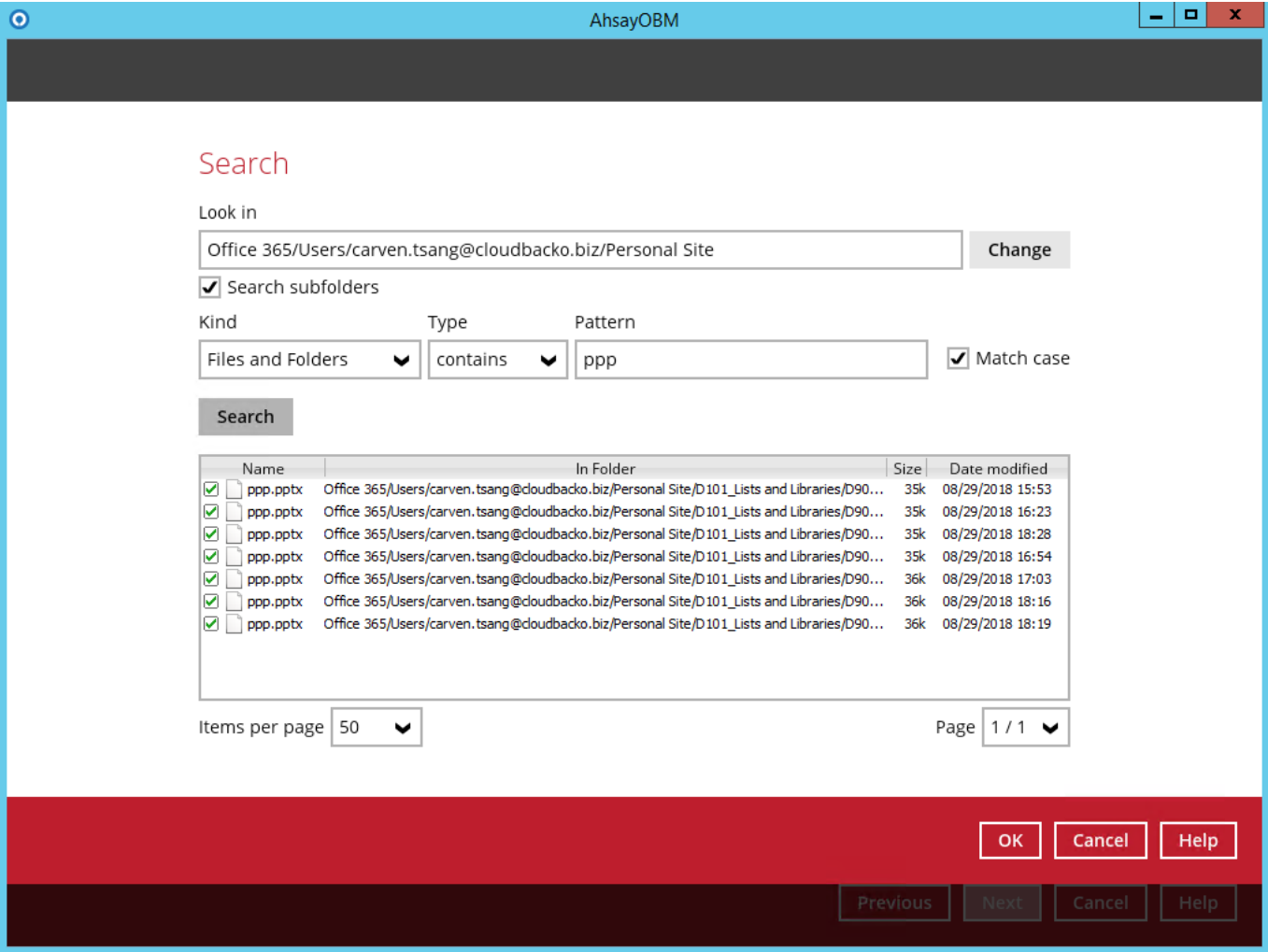
Help

Previous

Next

Cancel

Help



Explanation:

All personal site under Office 365/Personal Site that has the pattern that contains with ‘ppp’ with match case set to true will be included upon performing search.

As you can see on the screen shot above, the result panel contains the Name of the mail, Directory of the mails which are indicated In-Folder column, Size of each mails, and Date Modified.

The restore filter setting includes the Search subfolder and Match case set to true. Meaning, the filter will include all available subfolders in Personal Site upon searching. And it will strictly search only the specified pattern and case which starts with ‘ppp’.

Scenarios No. 2: Items from Site Collections

Example No. 1

Restore filter setting from Site Collections

Location:	Office 365/Site Collections
Search subfolders:	True
Kind:	Files and Directories
Type:	Starts With

Pattern:	A
Match Case:	True

Follow the step-by-step procedure indicated on [Restore Filter with AhsayOBM](#).

AhsayOBM

Search

Look in

Office 365/Site Collections

Change

☒ Search subfolders

Kind

Files and Directories

Type

starts with

Pattern

A

☒ Match case

Search

Name	In Folder	Size	Date modified
------	-----------	------	---------------

Items per page 50

Page -

OKCancelHelp

PreviousNextCancelHelp

AhsayOBM

Search

Look in

Office 365/Site Collections

Change

☒ Search subfolders

Kind

Files and Directories

Type

starts with

Pattern

A

☒ Match case

Searching ...

Stop

Name	In Folder	Size	Date modified
------	-----------	------	---------------

Items per page

50

Page

-

OK

Cancel

Help

Previous

Next

Cancel

Help

AhsayOBM

Search

Look in

Office 365/Site Collections

Change

☒ Search subfolders

Kind

Files and Directories

Type

starts with

Pattern

A

☒ Match case

Search

Name	In Folder	Size	Date modified
<input checked="" type="checkbox"/> AB922B82-8406-4E49-B17B-9057BDF09503	Office 365/Site Collections/D901_ahsay.sharepoint.com...		
<input checked="" type="checkbox"/> AlternateMediaPlayer.xml	Office 365/Site Collections/D901_ahsay.sharepoint.com...	35k	09/29/2018 17:01
<input checked="" type="checkbox"/> AudioPreview.png	Office 365/Site Collections/D901_ahsay.sharepoint.com...	13k	09/29/2018 17:01

Items per page

50

Page

1 / 1

OK

Cancel

Help

Previous

Next

Cancel

Help

Explanation:

All SharePoint sites under Office 365/Site Collections that has the pattern that starts with 'A' with match case set to true will be included upon performing search.

As you can see on the screen shot above, the result panel contains the Name of the mail, Directory of the mails which are indicated In-Folder column, Size of each mails, and Date Modified.

The restore filter setting includes the Search subfolder and Match case set to true. Meaning, the filter will include all available subfolders in Site Collections upon searching. And it will strictly search only the specified pattern and case which starts with 'A'.

Example No. 2

Restore filter setting from Public Folders

Location:	Office 365/Public Folders
Search subfolders:	True
Kind:	Files and Folders
Type:	Ends With
Pattern:	t
Match Case:	True

Follow the step-by-step procedure indicated on [Restore Filter with AhsayOBM](#).

AhsayOBM

Search

Look in

Office 365/Public Folders

Change

☒ Search subfolders

Kind

Files and Folders

Type

ends with

Pattern

t

☒ Match case

Search

Name	In Folder	Size	Date modified
------	-----------	------	---------------

Items per page

50

Page

-

OK

Cancel

Help

Previous

Next

Cancel

Help

AhsayOBM

Search

Look in

Office 365/Public Folders

Change

☒ Search subfolders

Kind

Files and Folders

Type

ends with

Pattern

t

☒ Match case

Searching ...

Stop

Name	In Folder	Size	Date modified
------	-----------	------	---------------

Items per page

50

Page

-

OK

Cancel

Help

Previous

Next

Cancel

Help

AhsayOBM

Search

Look in

Office 365/Public Folders

Change

☒ Search subfolders

Kind

Files and Folders

Type

ends with

Pattern

t

☒ Match case

Search

Name	In Folder	Size	Date modified
<input checked="" type="checkbox"/> Pub-Test	Office 365/Public Folders		

Items per page

50

Page

1 / 1

OK

Cancel

Help

Previous

Next

Cancel

Help

Explanation:

All files and folders under Office 365/Public Folders that has the pattern that ends with 't' with match case set to true will be included upon performing search.

As you can see on the screen shot above, the result panel contains the Name of the mail, Directory of the mails which are indicated In-Folder column, Size of each mails, and Date Modified.

The restore filter setting includes the Search subfolder and Match case set to true. Meaning, the filter will include all available subfolders in Public Folder upon searching. And it will strictly search only the specified pattern and case which ends with 't'.

From:
<https://wiki.ahsay.com/> - Ahsay Wiki

Permanent link:
https://wiki.ahsay.com/doku.php?id=public:documents_and_guides:v8:obm:office-365-windows:appendix-c&rev=1588138897

Last update: 2020/04/29 13:41

