

# [V7] ISSUE: Cannot connect SSH, please check the SSH settings error when creating a backup set on a VMware ESXi 6.0 Update 2 host

**Article ID:** 5206

**Reviewed:** 2017-04-10

## Product Version:

AhsayOBM: 7.5.0.0 - 7.9.2.2

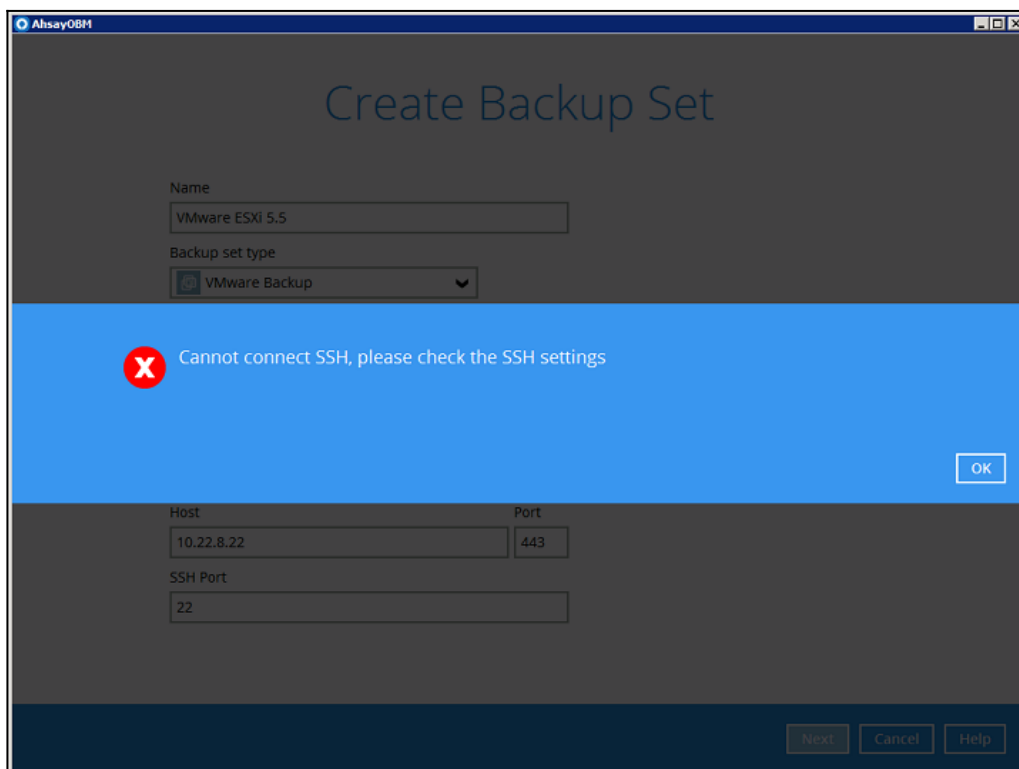
OS: All platforms

**ATTENTION** 1st January, 2022: v7 officially End-of-Life [[details](#)]

## Problem Description

When creating a backup set on a VMware ESXi 6.0 Update 2 host the following error is displayed by AhsayOBM:

*Cannot connect SSH, please check the SSH settings*



## Cause

This issue can occur, because VMware ESXi 6.0 Update 2 is embedded with OpenSSH 7.1, which disables older cryptographic algorithm such as diffie-hellman-group1-sha1.

## Resolution

To resolve the issue, patch the AhsayOBM application to version 7.11.0.4 or above. The instructions can be found by [Clicking Here](#).

## Keywords

VMware ESXi 6.0 Update 2, SSH, diffie-hellman

From:  
<https://wiki.ahsay.com/> - **Ahsay Wiki**

Permanent link:  
[https://wiki.ahsay.com/doku.php?id=public:5206\\_issue:cannot\\_connect\\_ssh\\_please\\_check\\_the\\_ssh\\_settings\\_error\\_when\\_creating\\_a\\_backup\\_set\\_on\\_a\\_vmware\\_esxi\\_6.0\\_update\\_2\\_host](https://wiki.ahsay.com/doku.php?id=public:5206_issue:cannot_connect_ssh_please_check_the_ssh_settings_error_when_creating_a_backup_set_on_a_vmware_esxi_6.0_update_2_host)

Last update: **2021/12/16 04:14**

