

[V7] ISSUE: Network drives are not displayed by AhsayOBM as a selectable destination for the image spool path when creating a Windows System Backup Set

Article ID: 5200

Reviewed: 2016-10-04

Product Version:

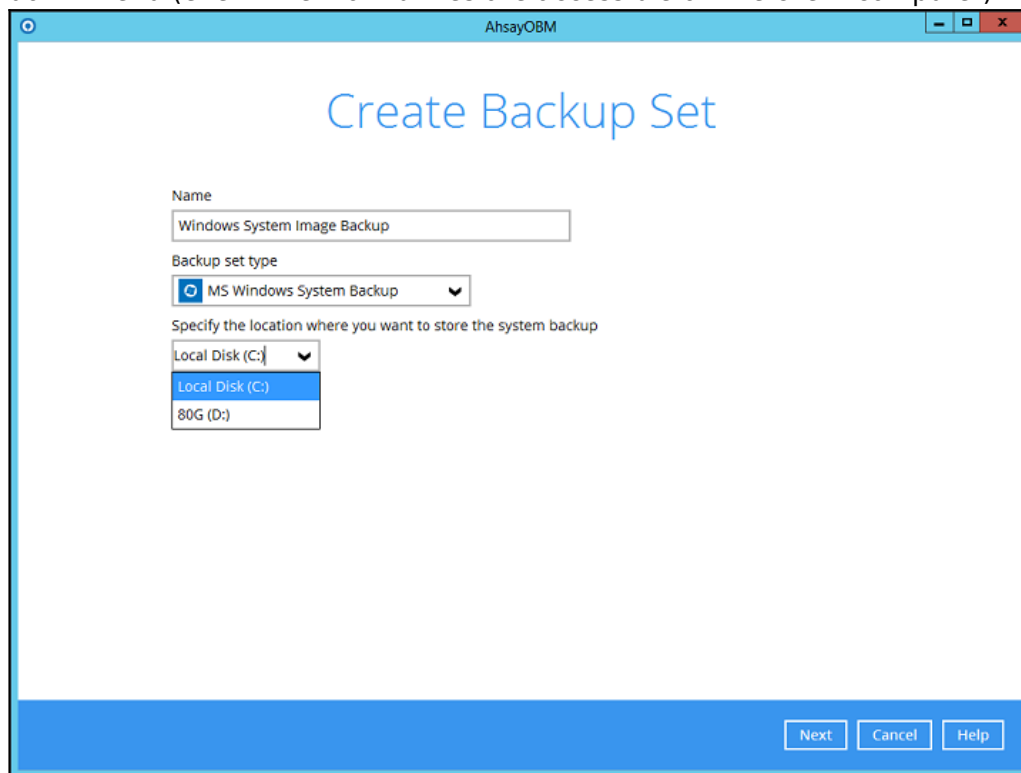
AhsayOBM: 7.5.0.0 - 7.7.2.0

OS: Windows

ATTENTION 1st January, 2022: v7 officially End-of-Life [[details](#)]

Problem Description

When creating a Windows System Backup Set, no network drive is displayed as a select-able destination under the **Specify the location where you want to store the system backup** drop down menu (even if network drives are accessible on the client computer).



Cause

This is a known issue with AhsayOBM version 7.5.0.0 - 7.7.2.0

Resolution

To resolve the issue, patch the AhsayOBM application to version 7.9.0.0 or above. The instructions can be found by [Clicking Here](#).

Keywords

network, mapped, spool path, windows system backup

From:
<https://wiki.ahsay.com/> - Ahsay Wiki

Permanent link:
https://wiki.ahsay.com/doku.php?id=public:5200_issue:network_drives_are_not_displayed_by_ahsayobm_as_a_selectable_destination_for_the_image_spool_path_when_creating_a_windows_system_backup_set

Last update: 2021/12/16 03:52

