

Microsoft SQL Database Backup Set

AhsayOBM allows you to back up databases in your Microsoft SQL Server with the MS SQL Server Backup Module, which provides you with a set of tools to protect your MS SQL Server, whether in VSS backup mode or ODBC backup mode.



System Architecture

Below is the system architecture diagram illustrating the major elements involved in the backup process among the MS SQL server, AhsayOBM and AhsayCBS.

Requirements

You are strongly recommended to configure or check all the requirements below before you proceed with the MS SQL server backup and restoration. AhsayOBM supports 2 backup modes when creating a backup set for MS SQL server, VSS mode and ODBC mode.

VSS Backup Mode

The VSS-based backup utilizing the Microsoft SQL Server VSS Writer to obtain a consistent snapshot of the MS SQL databases, no spooling / staging of database file(s) is required during the backup process.

Hardware Requirement

Refer to the following article for the list of hardware requirements for AhsayOBM: FAQ: Ahsay Hardware Requirement List (HRL) for version 8.1 or above

Software Requirement

Refer to the following article for the list of compatible operating systems and application versions: FAQ: Ahsay Software Compatibility List (SCL) for version 8.1 or above

AhsayOBM Installation

Make sure the latest version of AhsayOBM has been installed on the MS SQL server.

AhsayOBM Add-On Module Configuration

Make sure the Microsoft SQL Server feature has been enabled as an add-on module in your AhsayOBM user account. Contact your backup service provider for more details.

Backup Quota Requirement

Make sure that your AhsayOBM user account has sufficient storage quota assigned to accommodate the storage of MS SQL Server backup set and retention policy.

Continuous Backup Module

The continuous backup add-on module is required if you would like to enable the continuous backup feature.

Java Heap Size

The default Java heap size setting on AhsayOBM is 2048MB. For MS SQL Server backup it is highly recommended to increase the Java heap size setting to be at least 4096MB to improve backup and restore performance. The actual heap size is dependent on amount of free memory available on your MS SQL server.

User Account Privileges

Make sure the operating system account that performs the backup and restore has sufficient permission to access both SQL server and VSS.

Temporary Directory Folder

1. The temporary directory folder is used by AhsayOBM for storing backup set index files and incremental/differential delta files. To ensure optimal backup/restoration performance, it is recommended that the temporary directory folder to be set to a local drive. The temporary folder should not be located on Windows system partition or the database partition to minimize any potential performance impact on Windows or database.
2. It is recommended that the temporary directory folder should have at least free disk space of 50% of the total database size because the default Delta ratio is 50%. The actual free disk space required depends on various factors including the size of the database, number of backup destinations, backup frequency, in-file delta settings etc.
3. The SQL Windows service must have read and write permission to the temporary directory.

SQL Server VSS Writer

Make sure the SqlServerWriter has been installed and running on the SQL server, and the writer state is Stable. This can be verified by running the “vssadmin list writers” command in the Windows Command Prompt.

If you do not find the SqlServerWriter in the result, make sure the SQL Server VSS Writer has been started by following the instructions in Windows Services section below.

Example:

```
C:\Users\Administrator>vssadmin list writers
vssadmin 1.1 - Volume Shadow Copy Service administrative command-line
tool
(C) Copyright 2001-2013 Microsoft Corp.

Writer name: 'Task Scheduler Writer'
```

```
Writer Id: {d61d61c8-d73a-4eee-8cdd-f6f9786b7124}  
Writer Instance Id: {1bddd48e-5052-49db-9b07-b96f96727e6b}  
State: [1] Stable  
Last error: No error
```

Writer name: 'VSS Metadata Store Writer'

```
Writer Id: {75dfb225-e2e4-4d39-9ac9-ffaaff65ddf06}  
Writer Instance Id: {088e7a7d-09a8-4cc6-a609-ad90e75ddc93}  
State: [1] Stable  
Last error: No error
```

Writer name: 'Performance Counters Writer'

```
Writer Id: {0bada1de-01a9-4625-8278-69e735f39dd2}  
Writer Instance Id: {f0086dda-9efc-47c5-8eb6-a944c3d09381}  
State: [1] Stable  
Last error: No error
```

Writer name: 'SqlServerWriter'

```
Writer Id: {a65faa63-5ea8-4ebc-9dbd-a0c4db26912a}  
Writer Instance Id: {3de4f842-4d57-4198-9949-3b3f8c2629dc}  
State: [1] Stable  
Last error: No error
```

Writer name: 'System Writer'

```
Writer Id: {e8132975-6f93-4464-a53e-1050253ae220}  
Writer Instance Id: {32d2fccc-624f-4baa-beb3-17b27fcae9ee}  
State: [1] Stable  
Last error: No error
```

Writer name: 'ASR Writer'

```
Writer Id: {be000cbe-11fe-4426-9c58-531aa6355fc4}  
Writer Instance Id: {e8580fb0-b51f-40ab-91bf-4eff5107c4d1}  
State: [1] Stable  
Last error: No error
```

Writer name: 'WMI Writer'

```
Writer Id: {a6ad56c2-b509-4e6c-bb19-49d8f43532f0}  
Writer Instance Id: {de1b6322-1d96-4f85-adbf-05cb517322ea}  
State: [1] Stable  
Last error: No error
```

Writer name: 'BITS Writer'

```
Writer Id: {4969d978-be47-48b0-b100-f328f07ac1e0}  
Writer Instance Id: {a623b49f-a3d4-42d2-af9a-4e924fb31262}  
State: [1] Stable  
Last error: No error
```

Writer name: 'Registry Writer'

```
Writer Id: {afbab4a2-367d-4d15-a586-71dbb18f8485}  
Writer Instance Id: {cc6b42f1-ebd0-429f-b3d3-e860905d40d3}  
State: [1] Stable
```

Last error: No error

Writer name: 'Shadow Copy Optimization Writer'

Writer Id: {4dc3bdd4-ab48-4d07-adb0-3bee2926fd7f}

Writer Instance Id: {957ff981-d54f-4a1f-8798-bd9bd76396bd}

State: [1] Stable

Last error: No error

Writer name: 'COM+ REGDB Writer'

Writer Id: {542da469-d3e1-473c-9f4f-7847f01fc64f}

Writer Instance Id: {801fea63-6bfc-406d-9a40-4ad5af484773}

State: [1] Stable

Last error: No error

MS SQL Server Volumes

MS SQL Server volumes must use a file system which supports the use of VSS snapshot, for example NTFS.

Windows Services

Ensure that the following services have been enabled in the Windows Services menu.

Launch Services in Windows by clicking Start then typing "Services" in the search box. All MS SQL server related services should be started by default, in case if it is not, turn it on by right clicking the item then selecting Start.

1. SQL Server VSS Writer



2. SQL Server Services

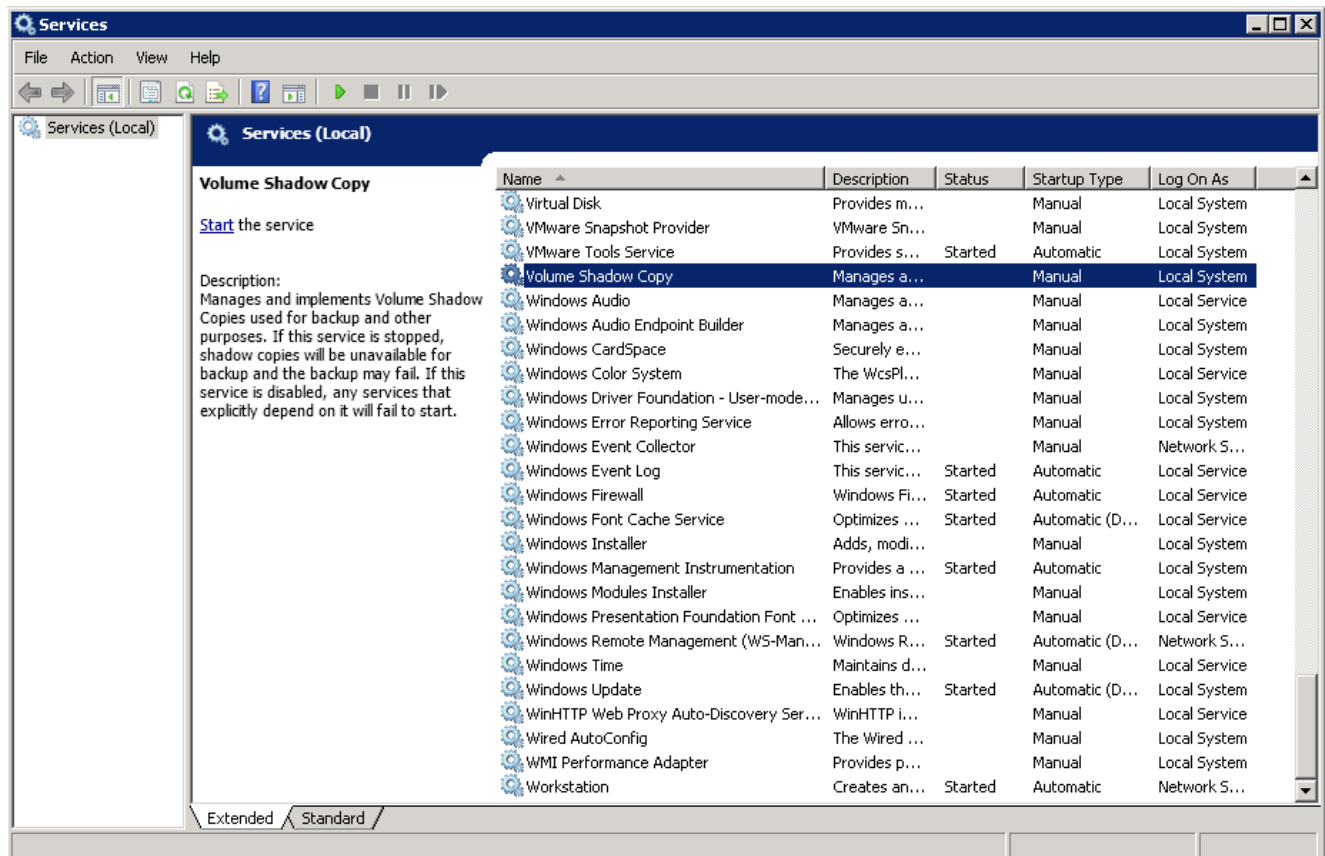


3. Volume Shadow Copy



MS SQL Server Registry

Make sure the MS SQL entry is present in the registry key "HKEY_LOCAL_MACHINE\SOFTWARE\Microsoft\Microsoft SQL Server\Instance Names\SQL". To access this path, type "regedit" in the command prompt to launch the Registry Editor.



NOTE

Pay extra attention when you are checking configuration in Registry Editor. Any unauthorized changes could cause interruption to the Windows operation.

MS SQL Recovery Model

VSS backup mode does not support backup of transaction log files, but for databases configured in either Full or Bulk-logging recovery model, this may eventually result in transaction logs filling up the available disk space on the volume of the MS SQL Server. Refer to:

<https://technet.microsoft.com/en-us/library/cc966520.aspx>

To prevent this from occurring, you can modify the recovery model of database selected for backup to Simple.

Alternatively, to truncate the transaction log files, you can perform a transaction log backup manually, or create an additional MS SQL database backup set in ODBC backup mode to perform a transaction log backup.

Truncating Transaction Log

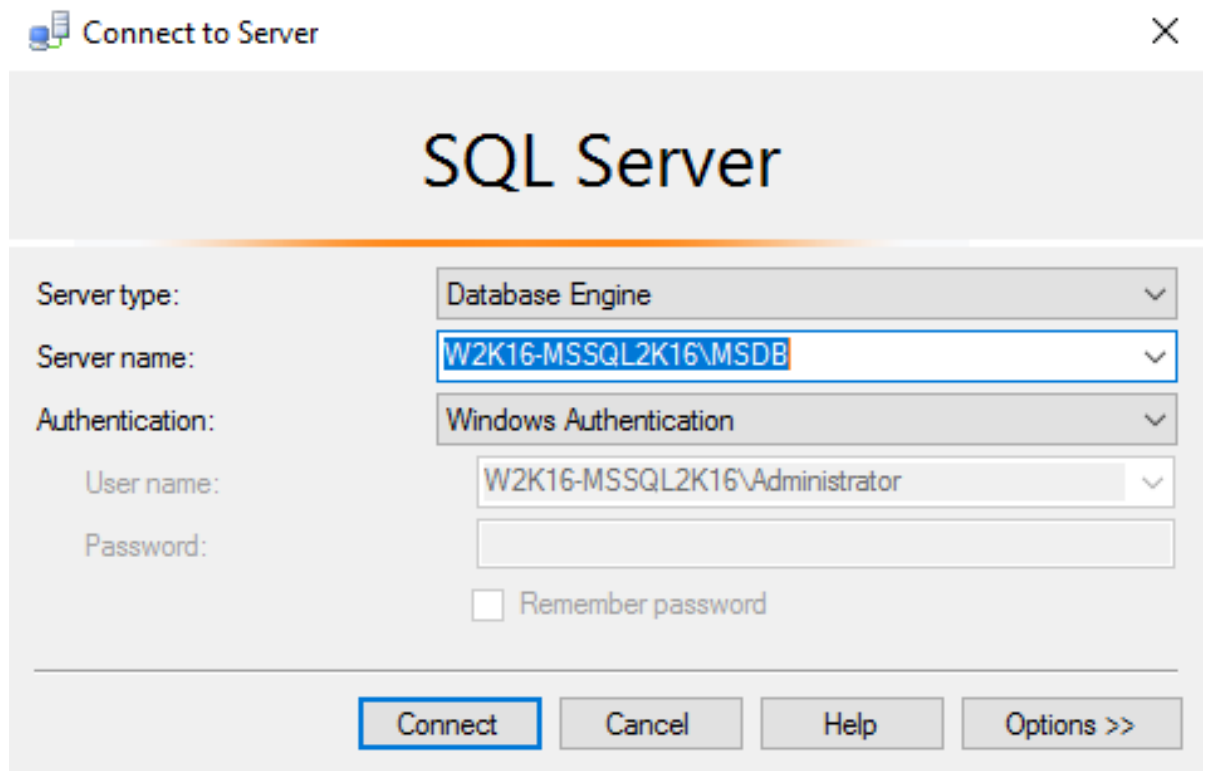
The instructions below only apply for database with full recovery model.

Since AhsayOBM v8 utilizes VSS-based backup, which does not support log backup (<https://technet.microsoft.com/en-us/library/cc966520.aspx>), transaction log of database in full / bulk-logging recovery model may eventually fill up all disk space available on the volume.

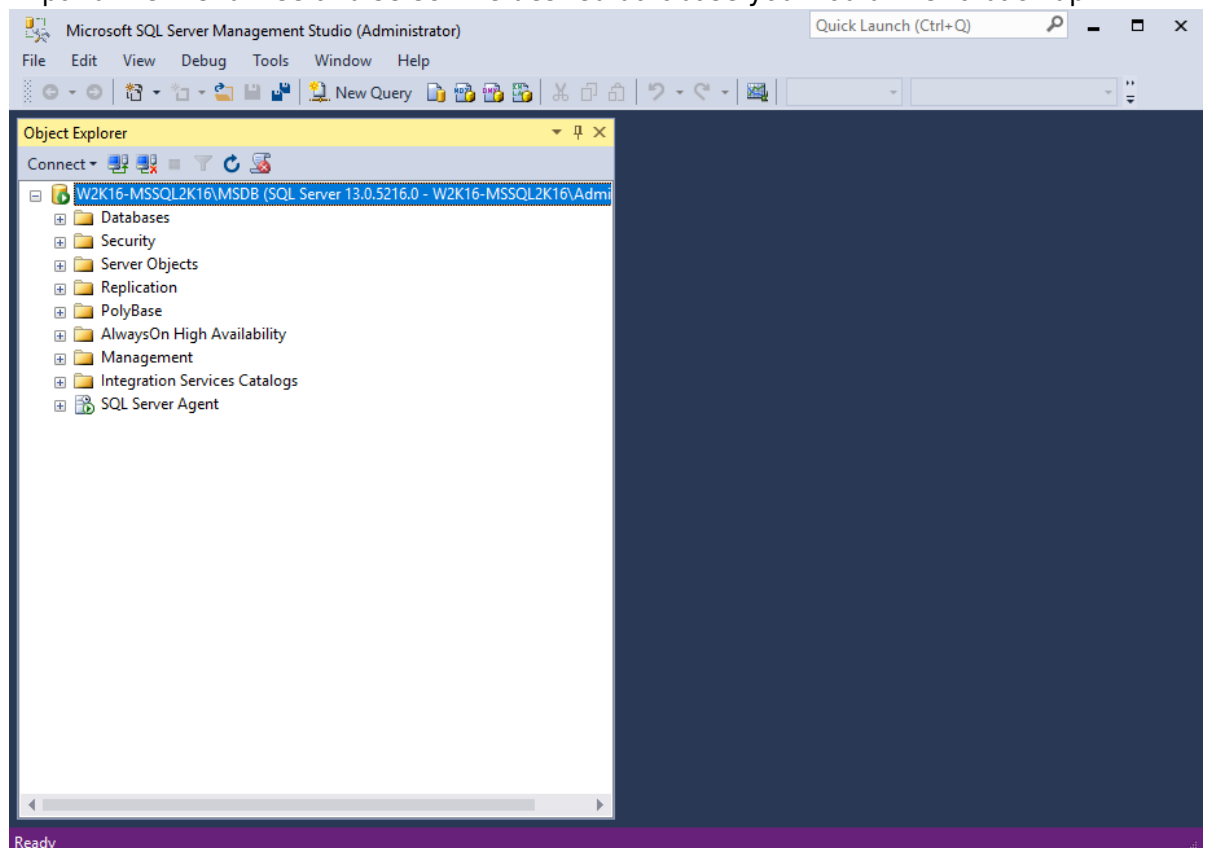
Below are steps to perform a log backup in the SQL Server Management Studio. For further

details on this topic, refer to this URL: <https://msdn.microsoft.com/en-us/library/ms179478.aspx>

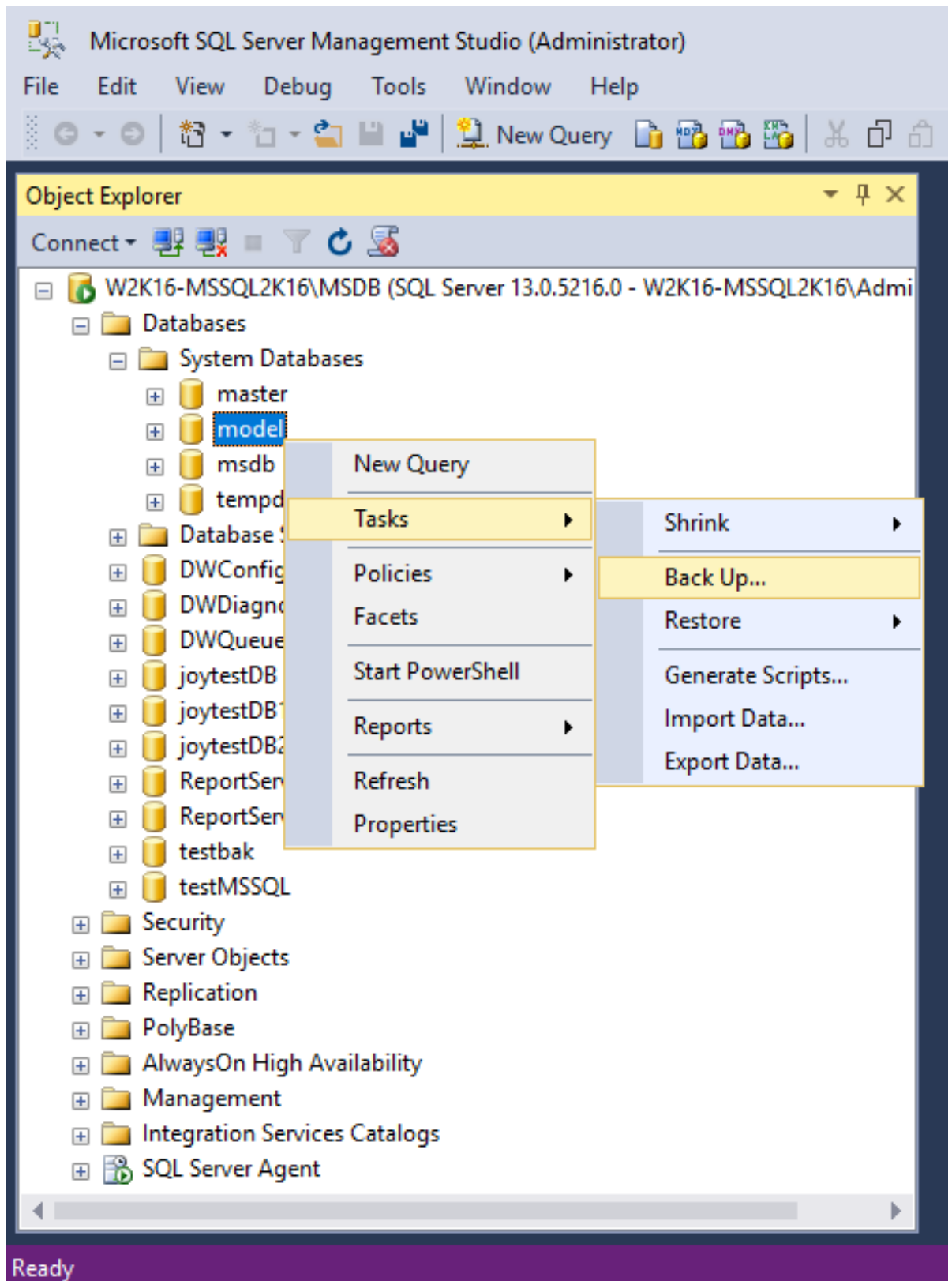
1. Launch SQL Server Management Studio in Windows.
2. Select the SQL server you would like to connect to, and the corresponding authentication method, then click Connect to proceed.



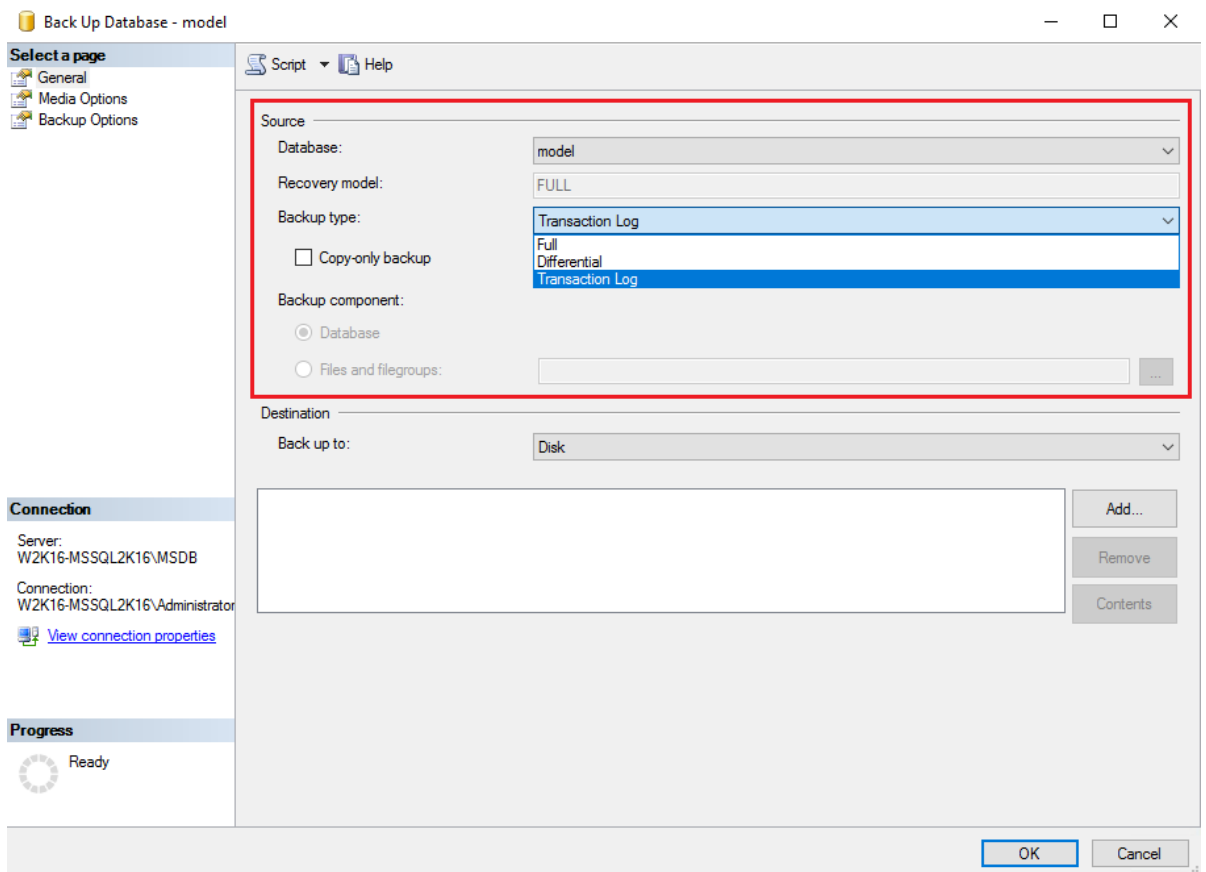
3. Expand the menu tree and select the desired database you would like to back up.



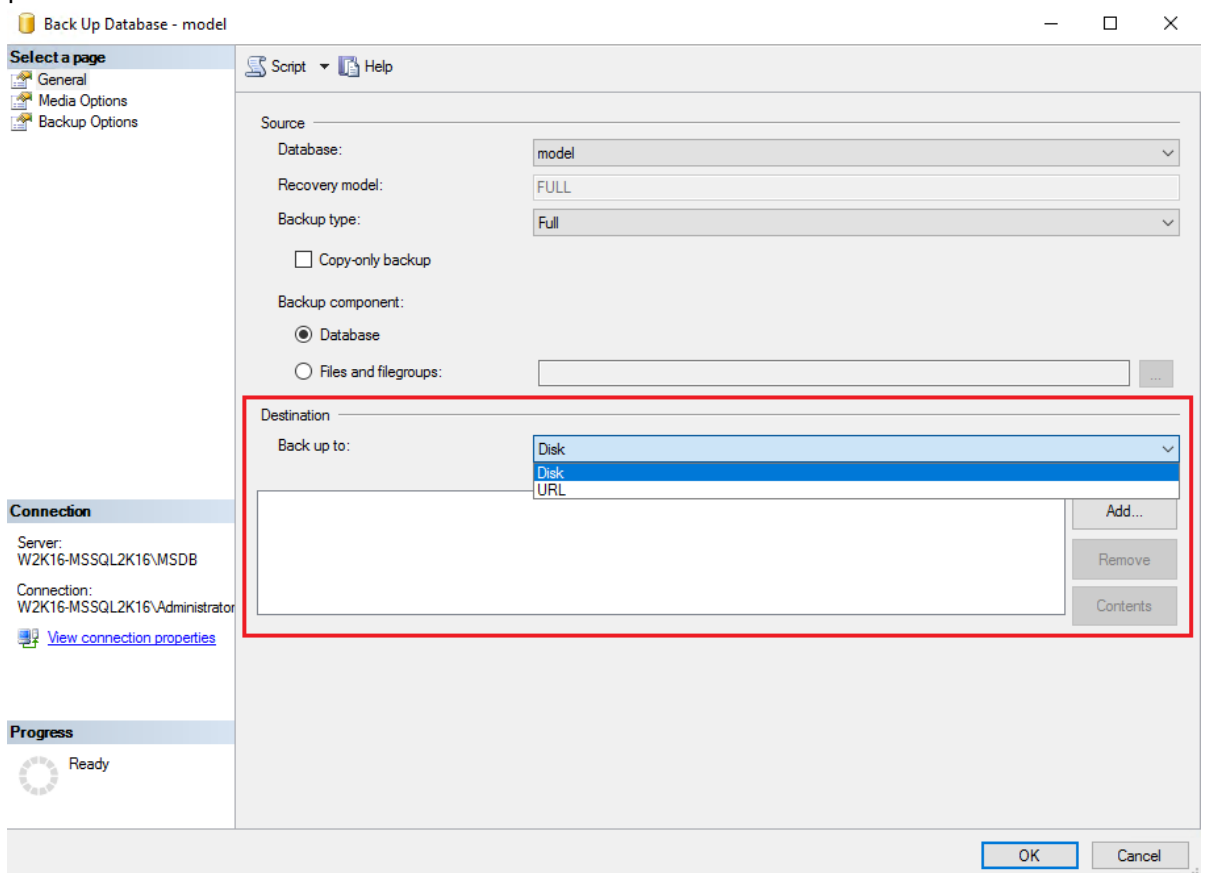
4. Right click the database name, then go to Tasks > Back Up. The Back Up Database dialog box shows.



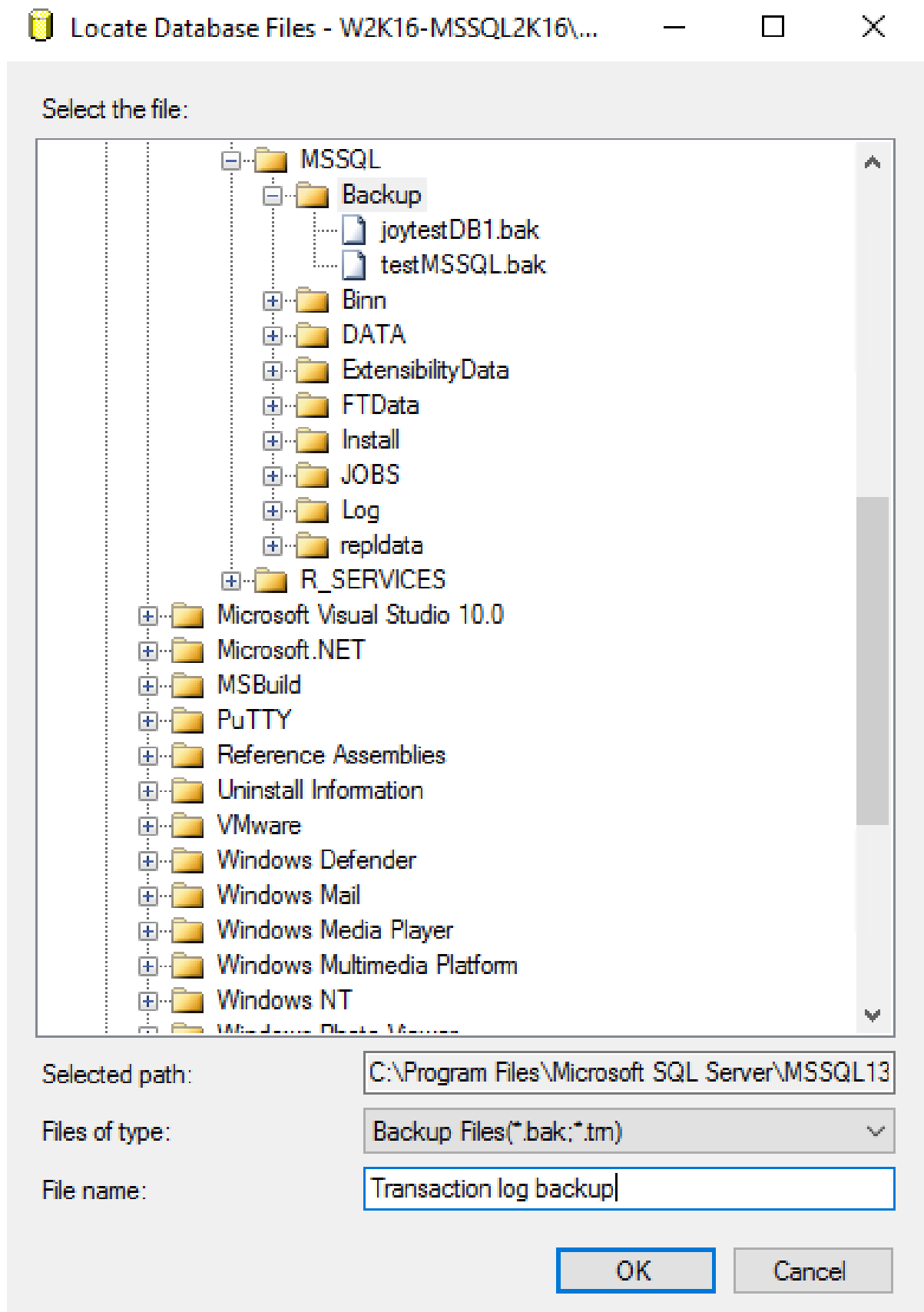
5. In the Source section, confirm the database name, then select Transaction Log in the Backup type drop-down menu.



6. Select Disk or URL as the destination of the backup, then click Add to select a destination path.



7. After selecting the destination path, click OK twice to proceed.



- Go to the Backup Options, then in the Backup set section, name the backup set and enter a description of the backup set if needed.

Configure the Backup set to expire after a specified number of day or on a specified date. Set to 0 day if you do not want the backup set to expire

Back Up Database - model

Select a page

- General
- Media Options
- Backup Options

Script Help

Backup set

Name: Backup Set Name

Description:

Backup set will expire:

☒ After: 0 days

☐ On: 2/4/2019

Compression

Set backup compression: Use the default server setting

Encryption

☐ Encrypt backup

Algorithm: AES 128

Certificate or Asymmetric key:

Encryption is available only when Back up to a new media set is selected in Media Options.

Connection

Server: W2K16-MSSQL2K16\MSDB

Connection: W2K16-MSSQL2K16\Administrator

[View connection properties](#)

Progress

Ready

OK Cancel

9. Click OK to start the transaction log backup when you are done with all the necessary settings in the Back Up Database dialog box.

Back Up Database - model

Select a page

- General
- Media Options
- Backup Options

Script Help

Source

Database: model

Recovery model: FULL

Backup type: Transaction Log

☐ Copy-only backup

Backup component:

☒ Database

☐ Files and filegroups:

Destination

Back up to: Disk

C:\Program Files\Microsoft SQL Server\MSSQL13.MSDB\MSSQL\Backup\Transaction log backup

Add...

Remove

Contents

OK Cancel

ODBC Backup Mode

By using the ODBC mode for MS SQL backup, databases files are spooled to a temporary directory before being uploaded to the backup destination.

Hardware Requirement

Refer to the following article for the list of hardware requirements for AhsayOBM: FAQ: Ahsay Hardware Requirement List (HRL) for version 8.1 or above

Software Requirement

Refer to the following article for the list of compatible operating systems and application versions: FAQ: Ahsay Software Compatibility List (SCL) for version 8.1 or above

AhsayOBM Installation

Make sure the latest version of AhsayOBM has been installed on the MS SQL server.

AhsayOBM Add-On Module Configuration

Make sure the Microsoft SQL Server feature has been enabled as an add-on module in your AhsayOBM user account. Contact your backup service provider for more details.

Backup Quota Requirement

Make sure that your AhsayOBM user account has sufficient storage quota assigned to accommodate the storage of MS SQL Server backup set and retention policy.

Continuous Backup Module

The continuous backup add-on module is required if you would like to enable the continuous backup feature.

Java Heap Size

The default Java heap size setting on AhsayOBM is 2048MB. For MS SQL Server backup it is highly recommended to increase the Java heap size setting to be at least 4096MB to improve backup and restore performance. The actual heap size is dependent on amount of free memory available on your MS SQL server.

Temporary Directory Folder

1. The temporary directory folder is used by AhsayOBM for storing the database files, incremental/differential delta files and backup set index files. To ensure optimal backup/restoration performance, it is recommended that the temporary directory folder is set to a local drive.
2. The temporary folder should not be located on Windows system partition or the database partition to minimize any potential performance impact on Windows or database. If the temporary directory folder is located on a network drive, make sure the login account has sufficient permission to access the network resources.
3. Please refer to the following URL for more details:

<https://support.microsoft.com/en-us/help/2926557/sql-server-vdi-backup-and-restore-operations-require-sysadmin-privilege>

<https://technet.microsoft.com/en-us/library/cc966520.aspx>

1. It is recommended that the temporary directory folder should have at least free disk space of 150% of the total database size. The actual free disk space required depends on various factors including the size of the database, number of backup destinations, backup frequency, in-file delta settings etc.
2. The SQL Windows service must have read and write permission to the temporary directory.

Windows Services

Ensure that the following services have been enabled in the Windows Services menu. Launch Services in Windows by clicking Start then typing "Services" in the search box. All MS SQL server related services should be started by default, in case if it is not, turn it on by right clicking the item then selecting Start.

1. SQL Server Services



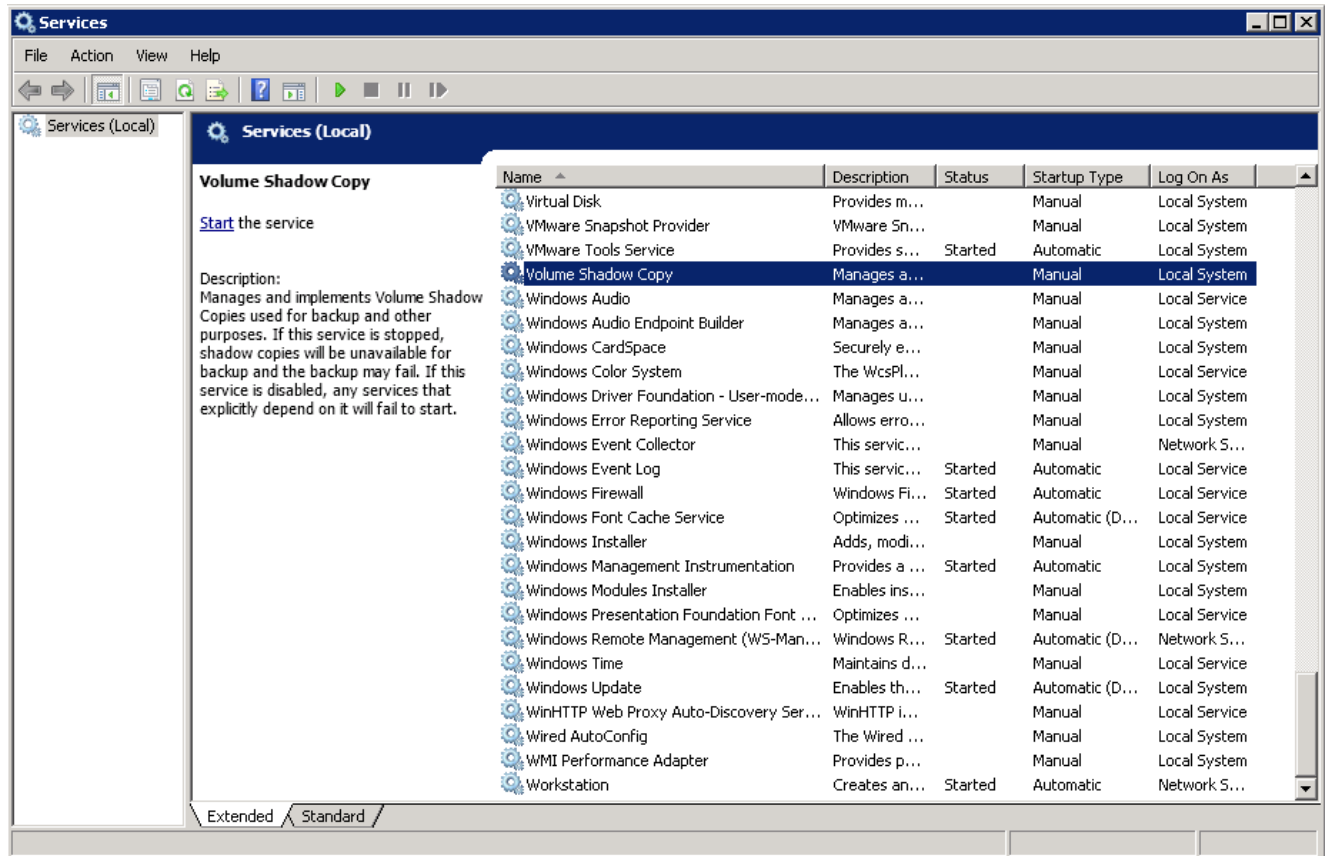
2. Volume Shadow Copy



MS SQL Server Registry

Make sure the MS SQL entry is present in the registry key
"HKEY_LOCAL_MACHINE\SOFTWARE\Microsoft\Microsoft SQL Server\Instance Names\SQL".

To access this path, type "regedit" in the command prompt to launch the Registry Editor.



Note: Pay extra attention when you are checking configuration in Registry Editor. Any unauthorized changes could cause interruption to the Windows operation.

Maximum Worker Thread

For SQL instance with large number of database (more than 500 databases), consider to increase the "Maximum Worker Thread" setting. Refer to the article below for further details.

<https://docs.microsoft.com/en-us/sql/database-engine/configure-windows/configure-the-max-worker-threads-server-configuration-option>

MS SQL Recovery Model

ODBC backup mode supports transaction log backup for database with Full recovery model.

1. For database with Simple recovery mode, only full database and differential database backups can be performed.

<https://docs.microsoft.com/en-us/sql/relational-databases/backup-restore/recovery-models-sql-server>

2. To perform a transaction log backup, please change the recovery model of corresponding databases from Simple to Full.

<https://docs.microsoft.com/en-us/sql/relational-databases/backup-restore/view-or-change-the-recovery-model-of-a-database-sql-server>

Considerations for System Databases Backup and Restore

Refer to the following tables for considerations for backup and restoration of system databases.

Backup

SQL server maintains a set of system level database which are essential for the operation of the server instance. Several of the system databases must be backed up after every significant update, they include:

1. **master**
2. **model**
3. **msdb**
4. **distribution** (for SQL database with replication enabled only)

This table summarizes all of the system databases.

System	Description	Backup	Suggestion
master	The database that records all of the system level information of a SQL server system.	Yes	<p>To back up any database, the instance of SQL server must be running.</p> <p>Startup of an instance of SQL server requires that the master database is accessible and at least partly usable.</p> <p>Back up the master database as often as necessary to protect the data sufficiently for your business needs.</p> <p>Microsoft recommends a regular backup schedule, which you can supplement with manual backup after any substantial update.</p>
model	The template for all databases that are created on the instance of SQL server.	Yes	<p>Backup the model database only when necessary, for example, after customizing its database options.</p> <p>Microsoft recommends that you create only full database backups of model, as required. Because model is small and rarely changes, backing up the log is unnecessary.</p>
msdb	The msdb database is used by SQL Server Agent for scheduling alerts and jobs, and for recording operators. It also contains history tables (e.g. backup / restore history table).	Yes	<p>Back up the msdb whenever it is updated.</p>

System	Description	Backup	Suggestion
tempdb	A workspace for holding temporary or intermediate result sets. This database is recreated every time an instance of SQL server is started.	No	The tempdb system database cannot be backed up.
distribution	The distribution database exists only if the server is configured as a replication distributor. It stores metadata and history data for all types of replication, and transactions for transactional replication.	Yes	Replicated databases and their associated system databases should be backed up regularly.

Restore

Heading 1	Heading 2
master	To restore any database, the instance of SQL server must be running. Startup of an instance of SQL server requires that the master database is accessible and at least partly usable. Restore or rebuild the master database completely if master becomes unusable.
model	Restore the model database if: * The master database has been rebuilt. * The model database has been damaged, for example due to media failure. * The model database has been modified, in this case, it is necessary to restore model from a backup when you rebuild master, because the Rebuild Master utility deletes and recreates model.
msdb	Restore the msdb database if the master database has been rebuilt.
distribution	For restore strategies of distribution database, please refer to the following online document from Microsoft for more details: http://msdn.microsoft.com/enus/library/ms152560.aspx

Documentation

- [Microsoft SQL Server Database Backup and Restore Guide](#)

Issues

- No database file found (MS SQL database backup) for database file name with extension in upper case
- Incorrect error message 'Another backup job is still running' is displayed (MS SQL database backup)
- The SQL Server VSS Writer service does not exist as an installed service (cannot create MS SQL database backup set on non-English Windows)
- MS SQL database backup job cannot run to completion (for backup set with backup schedule disabled)
- No database file found (MS SQL database backup) for database file name with unicode
- "No database file found for "%DB_Name%" error on MSSQL Server backups
- MSSQL Server databases are not shown in AhsayOBM backup source if the hostname of the database server is longer than 15 characters

- [AhsayOBM crashes when creating a MSSQL Server database backup set on a Windows 2008 32bit machine](#)
- [MSSQL Server database backup fails with "Cannot start shadow copy, reason =null" error](#)

From:
<https://wiki.ahsay.com/> - **Ahsay Wiki**

Permanent link:
https://wiki.ahsay.com/doku.php?id=public:microsoft_sql_database&rev=1566198064 

Last update: **2019/08/19 15:01**