

# [V8] FAQ: How to migrate AhsayCBS onto a new server?

**Article ID:** 8023

**Reviewed:** 2019-04-23

**Product Version:**

AhsayCBS: 8.1 to 8.x

OS: All platforms

## Description

This article contains information on how to migrate your AhsayCBS application onto a new hardware (Windows to Windows, or Linux to Linux).

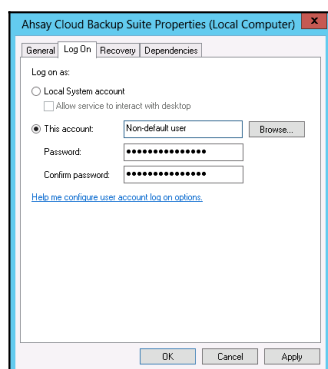
## Steps

To migrate your AhsayCBS application to a new server, refer to the following steps:

Value of %Applicaton Home% for various operating system:

- (Windows) C:\Program Files\AhsayCBS
  - (Linux) /usr/local/cbs
1. Document all configuration settings of your current AhsayCBS server (e.g. email settings, policy settings, replication settings ... etc).
  2. Download the latest version of AhsayCBS (.exe or .tar.gz according to the new server's operating system platform) by [Clicking Here](#).
  3. Install AhsayCBS on the new server.

**Note:** For AhsayCBS installation on Windows, update the Windows service log on setting if necessary.



Do not edit the log on setting of the NFS Service (Ahsay Systems Corporation) Service.

4. Shutdown the AhsayCBS service on the original AhsayCBS server.

- (Windows) **Control Panel > Administrative Tools > Services > Ahsay Cloud Backup Suite**
- (Linux) Run the script file at [ %Applicaton Home% / bin / shutdown.sh ]

**Important:** If you are performing the migration in multiple stages (e.g. migrating account-by-account to the new server), skip to the next step.

5. Copy the configuration files to, or manually re-configure the setting for the new AhsayCBS server.

- **For migration to an exact same version (e.g. AhsayCBS version 8.1.0.50 to version 8.1.0.50), you can copy the configuration files over to the new server:**

- Shutdown the AhsayCBS service on the new AhsayCBS server.
  - (Windows) **Control Panel > Administrative Tools > Services > Ahsay Cloud Backup Suite**
  - (Linux) Run the script file at [ %Applicaton Home% / bin / shutdown.sh ]
- Copy the following directories from the existing AhsayCBS to the new AhsayCBS server.

%Applicaton Home%\conf  
%Applicaton Home%\conf\Branding

Note: Note: AhsayCBS migration procedure is only applicable when the current and new hardware run same OS platform (Windows to Windows, or Linux to Linux); we do not support cross-platform migration (Linux to Windows, AhsayCBS to Linux, etc).

Also, if you have not shutdown the existing AhsayCBS server, you may be in violation of licensing terms by running two servers with the same license. Only one license key may be applied to any one active CBS server. From the CBS Web Console, access the License page to verify.

- To preserve existing logs, copy the following directories from the existing AhsayCBS to the new AhsayCBS server.

%Applicaton Home%\logs  
%Applicaton Home%\system

- To preserve existing policies and user groups, copy the following directories from the existing AhsayCBS to the new AhsayCBS server.

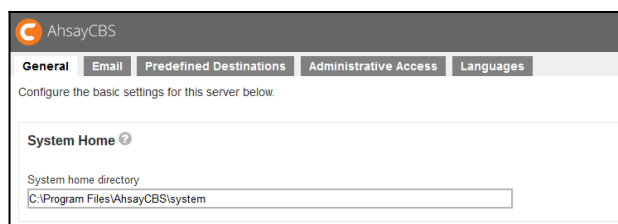
%Applicaton Home%\system\obs\policies

- Startup the AhsayCBS service on the new AhsayCBS server.
  - (Windows) **Control Panel > Administrative Tools > Services > Ahsay Cloud Backup Suite**
  - (Linux) Run the script file at [ \${Install-Home} / bin / startup.sh ]
- **For migration to a different version (e.g. AhsayCBS version 8.1.0.0 to version 8.1.0.50), you will need to manually re-configure the server settings:**
  - Login to the AhsayCBS web console of the new server.
  - Manually re-configure all settings for the new AhsayCBS server, according the settings documented previously in Step 1.

**Important:** Do not replace the configuration files from the old to new server directly, configuration files from a previous version is not fully compatible with a newer version of the software.

6. Copy the System Home and User Home to the new AhsayCBS server.

- **For system home and user home located on local volumes, you can copy the system home and user home over to the new server:**
  - Copy the system home folder from the existing server to the new AhsayCBS server.
  - Login to the AhsayCBS web console (of the new AhsayCBS).
  - (If necessary) Update the system home setting under **System Settings > Basic > General > System Home** to where you have copied the system home folder to.



- Copy the user home folder from the existing server to the new AhsayCBS server.

Note: Copy the entire user home to the new server if the AhsayCBS will be migrated at once. Alternatively, copy each backup account one-by-one if the migration will be performed in stages.

For example, copy:

%Existing\_Location%\UserHome\%username1%

%Existing\_Location%\UserHome\%username2%

...

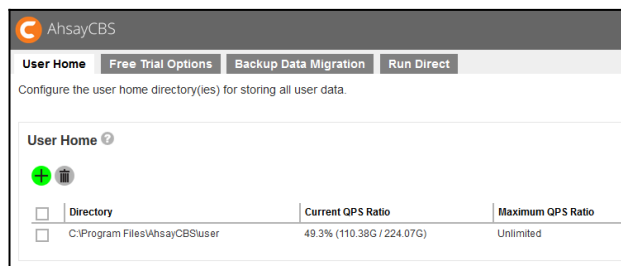
to

%New\_Location%\UserHome\%username1%

%New\_Location%\UserHome\%username2%

...

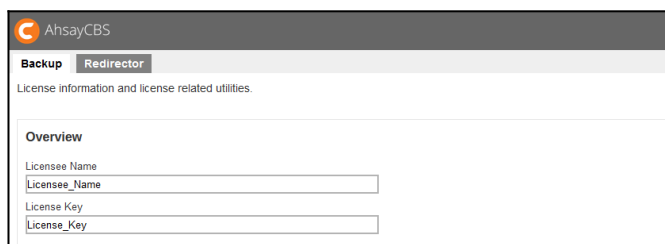
- (If necessary) Update the User Home setting under **Backup / Restore > Basic > General > System Home** to where you have copied the User Home folder to.



- **For system home and user home located on a network volume, ensure that the network system home and user home are accessible on the new server:**
  - Make sure that the network system home and user home are accessible by the new AhsayCBS server.
  - Login to the AhsayCBS web console of the new server, check on the system home setting under **System Settings > Basic > General > System Home**, confirm if it is configured to the correct network volume.
  - Check on the user home setting under **Backup / Restore > Basic > General > System Home**, confirm if it is configured to the correct network volume.

7. Check on the AhsayCBS settings afterward.

- Confirm if the License Details under the AhsayCBS web console at **System Settings > License > General**.



- Confirm if all backup users are displayed under the AhsayCBS web console at **Backup / Restore > Users, Groups, Policies > Backup User**.
- Re-configure the server settings if necessary.

**Important:** For cases where the backup server hostname is changed after the migration, the server hostname setting on the client agents must be re-configured on each client manually.

Open the AhsayOBM / ACB user interface, click **Show advanced option**, to update the Backup Server setting.

## Keywords

obs, migration, move, relocate, re-locate, hardware

From:

<https://wiki.ahsay.com/> - **Ahsay Wiki**

Permanent link:

[https://wiki.ahsay.com/doku.php?id=public:8023\\_faq:how\\_to\\_migrate\\_ahsaycbs\\_onto\\_a\\_new\\_server](https://wiki.ahsay.com/doku.php?id=public:8023_faq:how_to_migrate_ahsaycbs_onto_a_new_server) 

Last update: **2021/12/07 17:46**