

[V7] ISSUE: LAN manager authentication level must be 3 or higher (cannot create MS Exchange mail level backup)

Article ID: 5342

Reviewed: 2018-05-24

Product Version:

AhsayOBM: 7.3.0.0 to 7.x

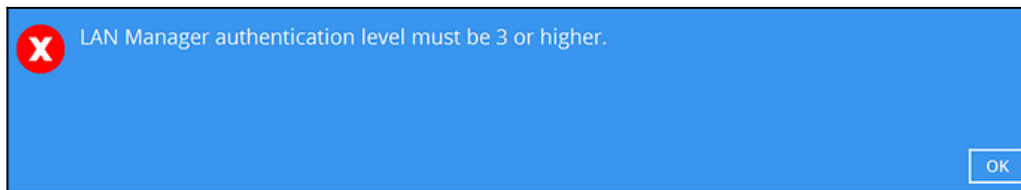
OS: Windows

ATTENTION 1st January, 2022: v7 officially End-of-Life [[details](#)]

Problem Description

When creating a MS Exchange Mail Level Backup Set, the following error message is displayed:

LAN Manager authentication level must be 3 or higher.



Cause

The error message suggested that for the domain which the Exchange server reside, the Network security: LAN Manager authentication level policy setting must be set to level 3 or higher (Registry security level), which is one of the following:

- Send NTLMv2 response only
- Send NTLMv2 response only. Refuse LM
- Send NTLMv2 response only. Refuse LM & NTLM

Reference:

<https://docs.microsoft.com/en-us/windows/security/threat-protection/security-policy-settings/network-security-lan-manager-authentication-level>

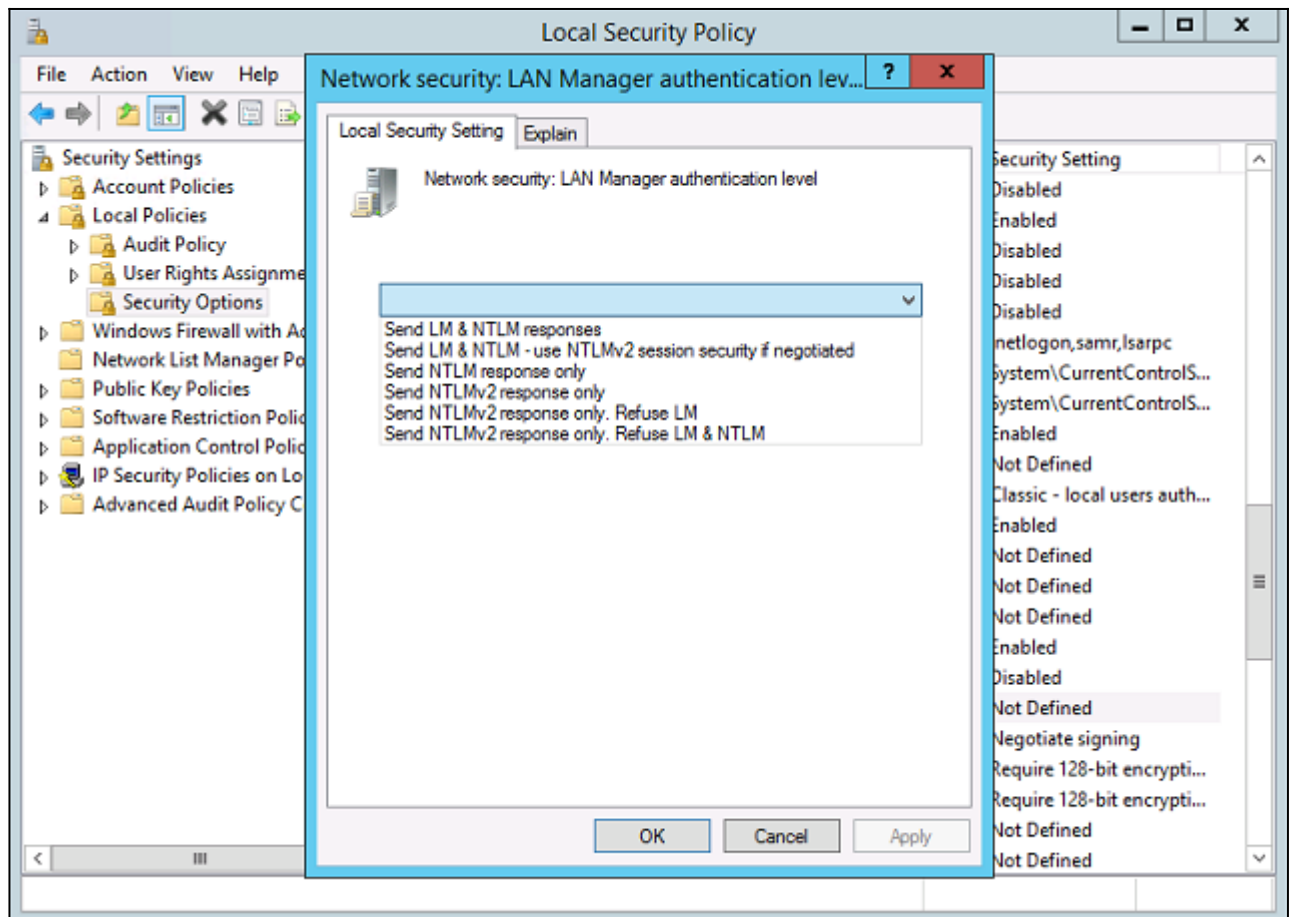
Resolution

To resolve the issue, please refer to the following steps:

- Open **Local Security Policy** from **Administrative Tools**.
- Under **Security Settings**, expand **Local Policies, Security Options, Network security:**

LAN Manager authentication level.

- Ensure that the setting is configured to use NTLMv2, for example:
 - Send NTLMv2 response only
 - Send NTLMv2 response only. Refuse LM
 - Send NTLMv2 response only. Refuse LM & NTLM



Keywords

lan, manager, obm, ahsayobm, exch, exchange, msexchange, auth, authentication

From:
<https://wiki.ahsay.com/> - **Ahsay Wiki**

Permanent link:
https://wiki.ahsay.com/doku.php?id=public:5342_lan_manager_auth_level_must_be_3_or_higher

Last update: **2021/12/16 07:42**