

ISSUE: Domino Version '900.0' not supported (cannot create IBM Lotus Domino backup set)

Article ID: 5332

Reviewed: 19/04/2018

Product Version:

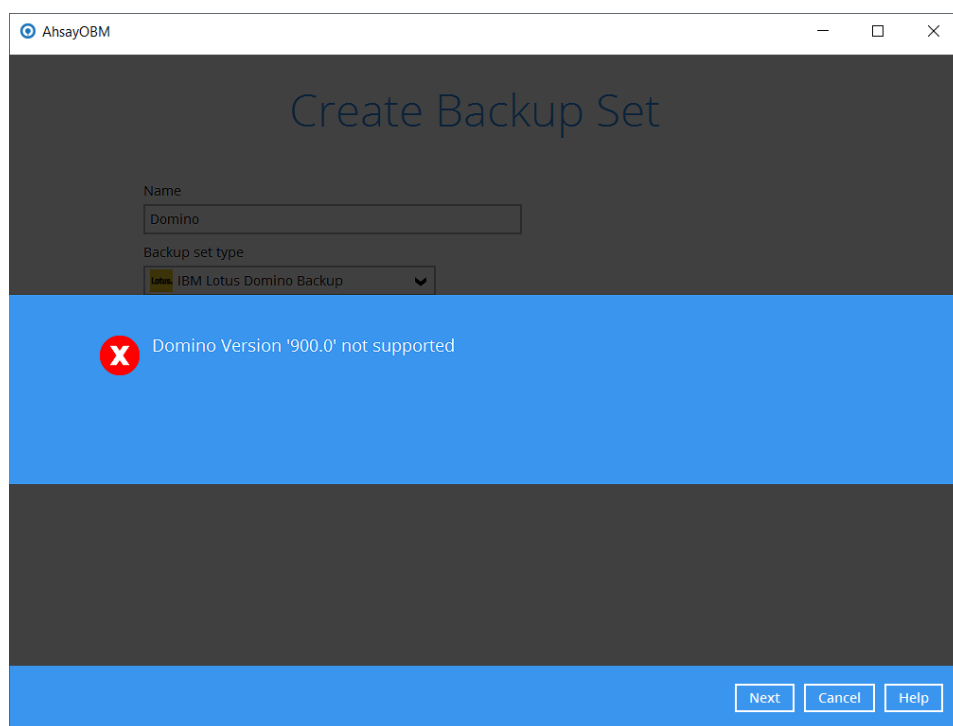
AhsayOBM: 7.3.0.0 or above

OS: All platforms (IBM Domino 9.0.1 FP10)

Problem Description

When creating a Lotus Domino backup set for a IBM Domino 9.0.1 FP10 server, the following error message is received in the AhsayOBM console:

Domino Version '900.0' not supported



Cause

This issue is related to a software bug of Domino 9.0.1 FP10, where the version string returned is incorrect. For more details, refer to the following support article from IBM (search for keyword "KBRNAVLMA3"):

<http://www-01.ibm.com/support/docview.wss?uid=swg21657963>

Resolution

To resolve the issue, apply the IBM Domino 9.0.1 FP10 Interim Fix 1 to the affected Domino server. The instruction can be found by [Clicking Here](#).

Keywords

domino, backupset, ibm, 900

From: <http://wiki.ahsay.com/> - **Ahsay Wiki**

Permanent link: http://wiki.ahsay.com/doku.php?id=public:5332_domino_version_900_not_supported

Last update: **2018/04/24 15:27**

