

ISSUE: Network drives are not displayed by AhsayOBM as a selectable destination for the image spool path when creating a Windows System Backup Set

Article ID: 5200

Reviewed: 04/10/2016

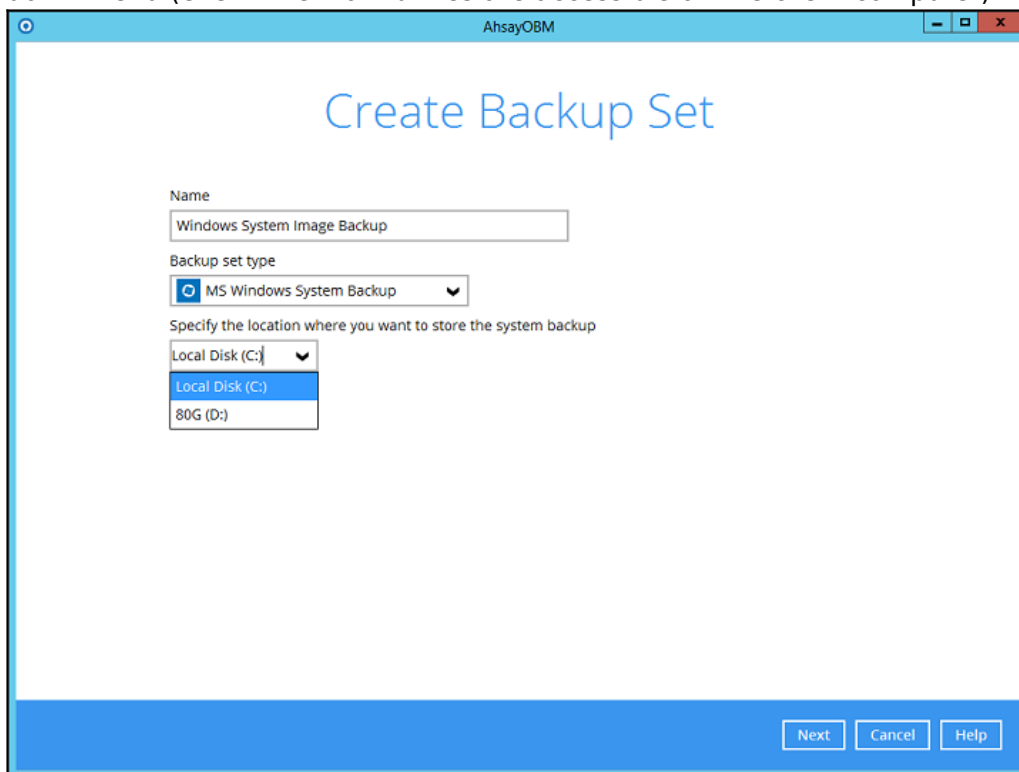
style="width:75%; border:thin solid black" **Product Version:**

AhsayOBM: 7.5.0.0 - 7.7.2.0

OS: Windows

Problem Description

When creating a Windows System Backup Set, no network drive is displayed as a select-able destination under the **Specify the location where you want to store the system backup** drop down menu (even if network drives are accessible on the client computer).



Cause

This is a known issue with AhsayOBM version 7.5.0.0 - 7.7.2.0

Resolution

To resolve the issue, patch the AhsayOBM application to version 7.9.0.0 or above. The instructions can be found by [Clicking Here](#).

Keywords

network, mapped, spool path, windows system backup

From: <http://wiki.ahsay.com/> - **Ahsay Wiki**

Permanent link: http://wiki.ahsay.com/doku.php?id=public:5200_issue:network_drives_are_not_displayed_by_ahsayobm_as_a_selectable_destination_for_the_image_spool_path_when_creating_a_windows_system_backup_set

Last update: **2018/06/27 18:28**

