

[V7] ISSUE: Cannot create a backup account on network shared user home (mapped drive) on AhsayCBS (The system cannot find the path specified)

Article ID: 5138

Reviewed: 2016-02-11

Product Version:

AhsayCBS: Pre-7.7.0.0

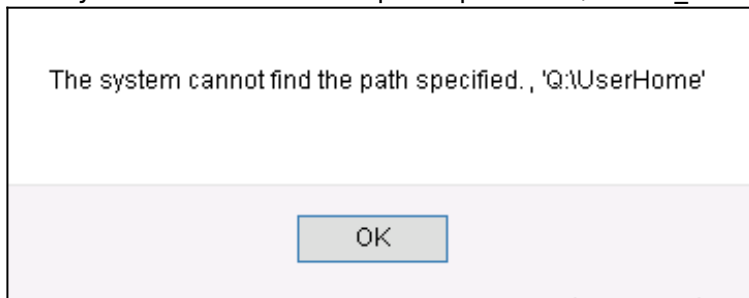
OS: Windows

ATTENTION 1st January, 2022: v7 officially End-of-Life [[details](#)]

Problem Description:

When creating a backup account on a mapped drive via the AhsayCBS console, the following error message is displayed:

The system cannot find the path specified. , 'Drive_letter\path'



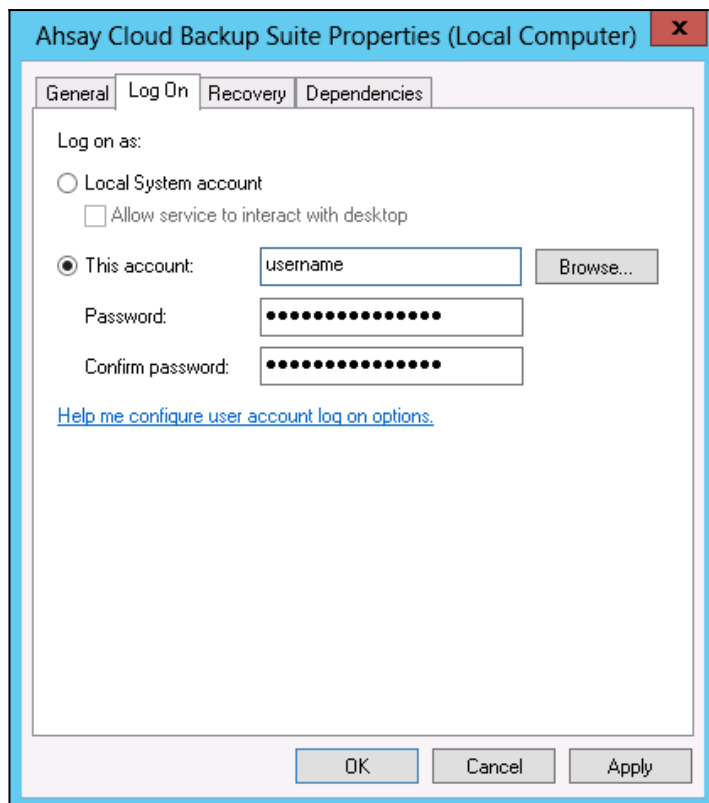
Cause:

This is a known issue with AhsayCBS version 7.3.2.0 - 7.5.0.6.

Resolution:

To resolve the issue, re-create the network shared User Home with UNC path instead of a mapped drive. Refer to the following steps:

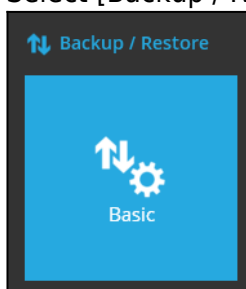
1. Configure the AhsayCBS service in services.msc:
 - [Control Panel] > [Administrative Tools] > [Services] > [Ahsay Cloud Backup Suite]
2. Under the [Log On] tab, select [Log on as] then enter the login credentials of an operating system account with permission to access the network path (to be configured as user home):



3. Restart the AhsayCBS service afterward.

4. Configure the network user home via the AhsayCBS console:

- Login to the AhsayCBS console.
- Select [Backup / Restore] and [Basic]:



- Click on the [Create] button, enter the UNC path to the network user home:

Important:

Use an UNC path (e.g. \\hostname\\user_home) instead of a mapped drive letter.

- Click [Add], then [Save] afterward to create the user home.

5. Create the backup account on the network user home again afterward.

Keywords:

add, create, user, account, mapped, userhome, network, shared

From:
<https://wiki.ahsay.com/> - Ahsay Wiki

Permanent link:
https://wiki.ahsay.com/doku.php?id=public:5138_issue:cannot_create_a_backup_account_on_network_shared_user_home_mapped_drive_on_ahsaycbs_the_system_cannot_find_the_path_specified

Last update: 2021/12/15 19:15

