

# FAQ: How to create a MS Exchange mail level backup set with AhsayOBM (MS Exchange 2013 Cumulative Update 19 or below)?

**Article ID :** 5011

**Reviewed :** 09/03/2020

**Product Version:**

AhsayOBM: v7.3.x to v7.17.2.2, v8.1.0.24 to 8.1.1.174

OS: Windows

## Description

This article describes how to create a MS Exchange mail level backup set for **Microsoft Exchange Server 2013 Cumulative Update 19 or below**

If you are using **Microsoft Exchange Server 2013 Cumulative Update 20 or above**, please refer to the following KB article before continuing

[http://wiki.ahsay.com/doku.php?id=public:announcement:end\\_of\\_exchange\\_mapi](http://wiki.ahsay.com/doku.php?id=public:announcement:end_of_exchange_mapi)

## Steps

Confirm that all requirements are met by the client server:

### Requirement checklist

- AhsayOBM installation

AhsayOBM must be installed on the Exchange server hosting the database (e.g. Exchange server with mailbox role).

- Mailbox access permission

The Active Directory account used for backup must have full access to the mailboxes. To grant full access right for the account, enter the following command in Exchange Management Powershell:

**Note:** %os\_username% is the username of the operating system account for backup.

- Membership setting of the operating system account

The Active Directory account used for the backup must be a member of the following security groups:

- Microsoft Exchange Security \ Organization Management

- Users \ Administrator
- Users \ Domain Admins
- Users \ Enterprise Admins

- Remote Exchange Management Shell

Remote Exchange Management Shell must be enabled for the operating system account used for the backup. To do that, enter the following command in Exchange Management Powershell:

- Mailbox enabled

The Active Directory account used for the backup must be have one or more Exchange Server mailboxes associated with it.

- Collaboration Data Objects (CDO) 1.2.1 installation

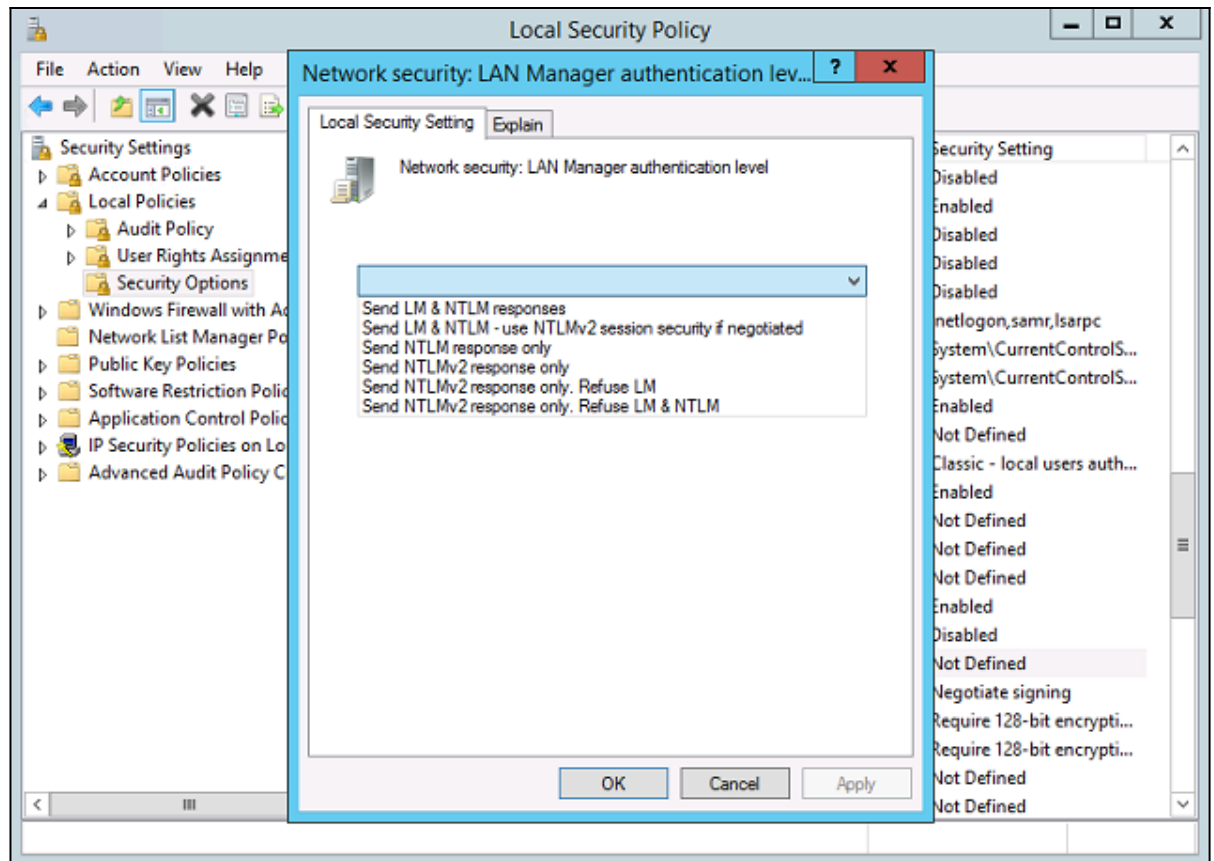
MAPI Collaboration Data Objects (CDO) 1.2.1 must be installed on the Exchange server.

Download and install CDO with the following installer: <https://www.microsoft.com/en-gb/download/...x?id=42040>

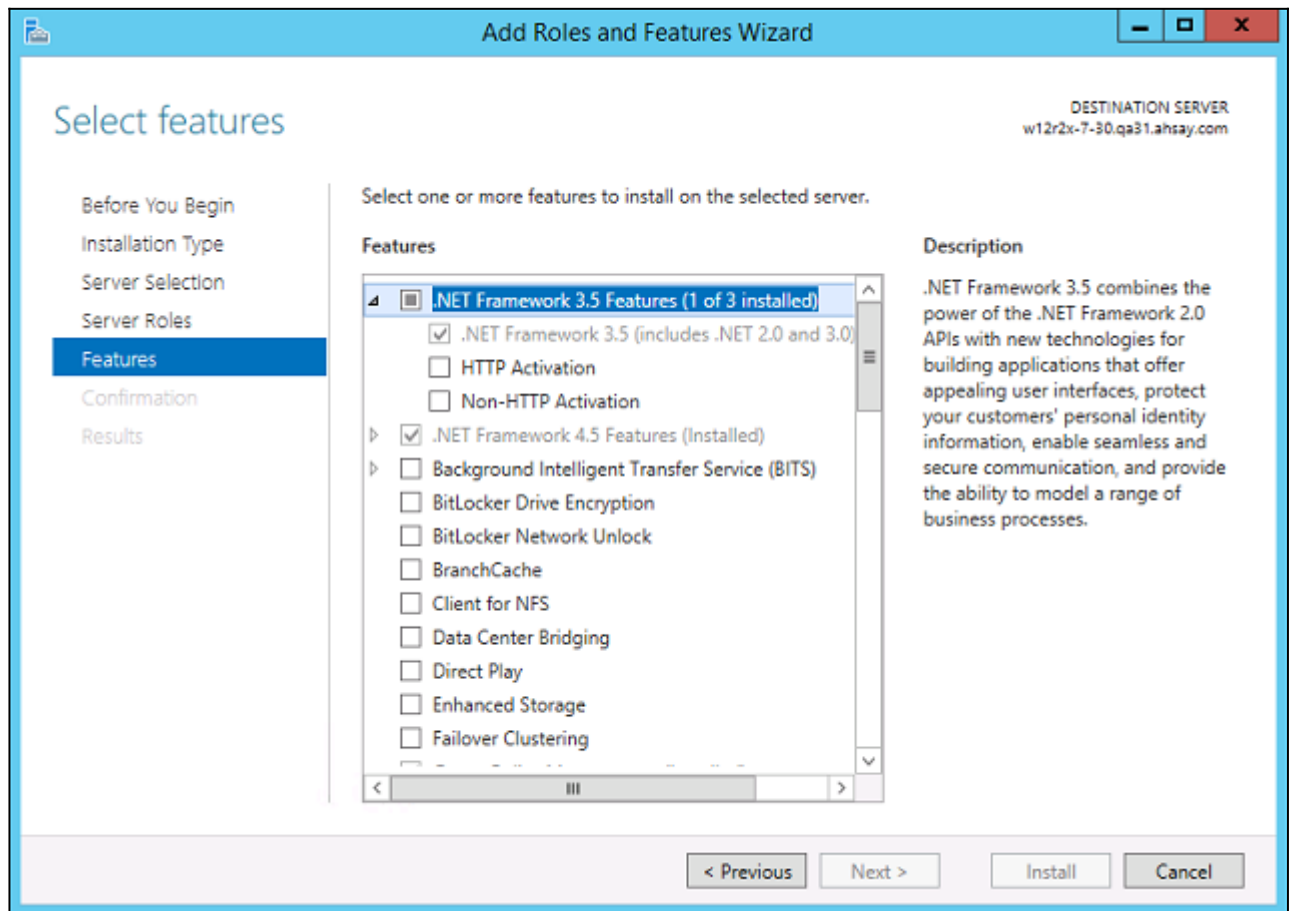
- LAN Manager authentication level

The LAN Manager authentication level configured on the Exchange server must be level 3 or above. To check on the setting:

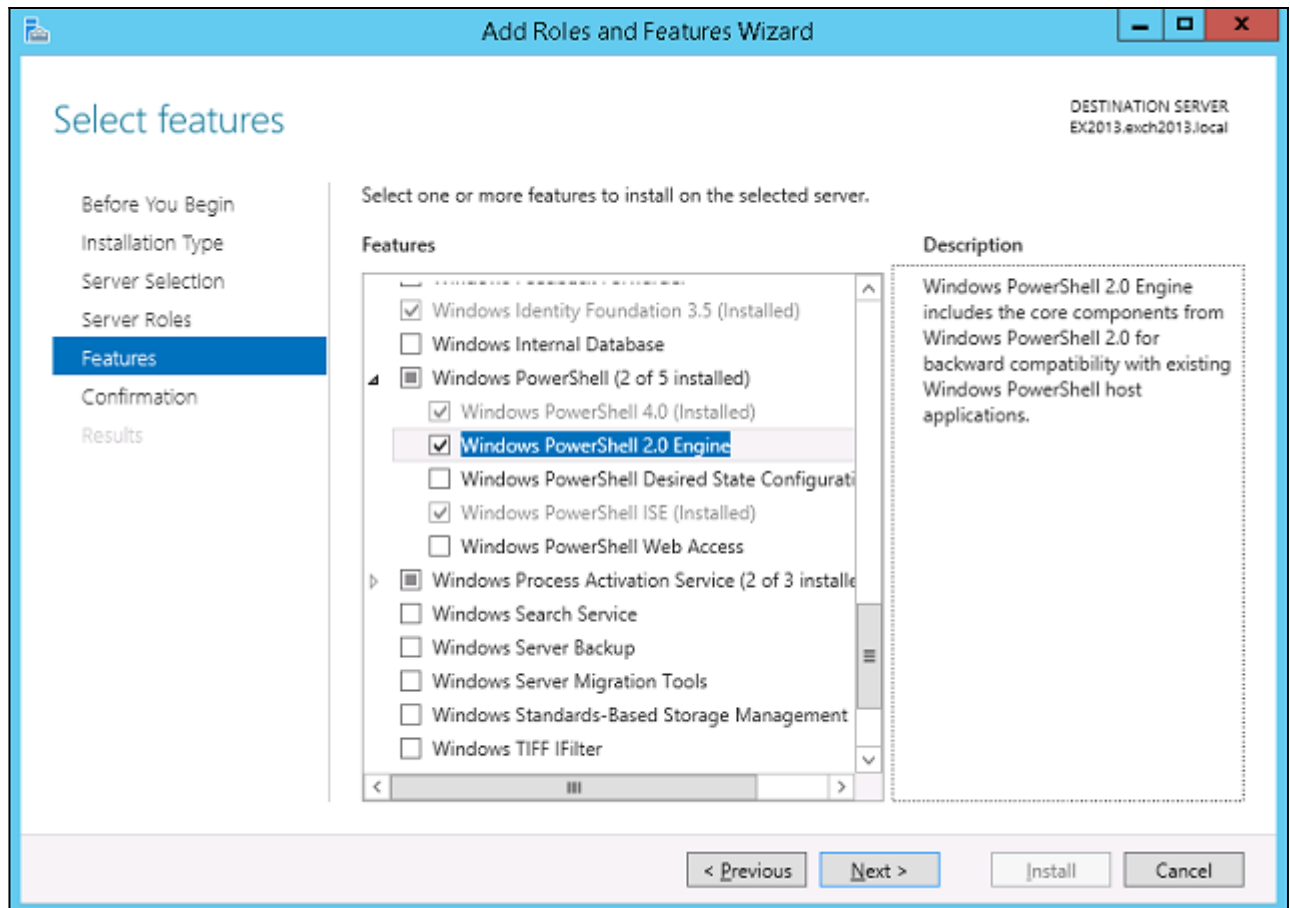
- Open **Local Security Policy** from **Administrative Tools**.
- Under **Security Settings**, expand **Local Policies, Security Options, Network security: LAN Manager authentication level**.
- Ensure that the setting is configured to use NTLMv2, for example:
  - Send NTLMv2 response only
  - Send NTLMv2 response only. Refuse LM
  - Send NTLMv2 response only. Refuse LM & NTLM



- .NET Framework 3.5 Features  
.NET Framework 3.5 Features must be installed.



- Windows PowerShell 2.0 Engine  
Windows PowerShell 2.0 Engine must be installed.



### Create backup set

With all requirements met, you can create the Exchange mail level backup set:

1. Login to the AhsayOBM client user interface.
2. Select the **Backup Sets** tile, and the **Add** button.



3. Select **MS Exchange Mail Level Backup** backup set type, and the corresponding Exchange Version. Then enter the backup set name:

## Create Backup Set

Name

Backup set type

Version

4. Configure the backup source of the backup set, select all mailboxes within the mailbox store by selecting the **Mailbox Store**:

## Backup Source

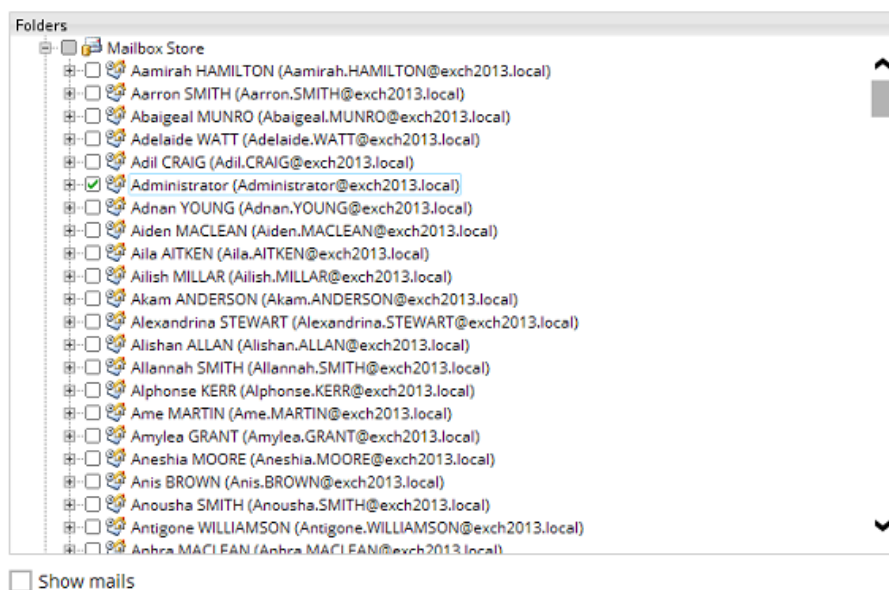
Folders

- EX
  - ☐ Mailbox Store
  - ☐ Public Folder Store

☐ Show mails

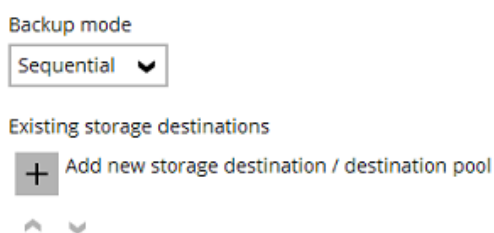
5. To select individual mailbox for backup, expand the Mailbox Store. Click **Show mails** to select individual mail items to be backup:

## Backup Source

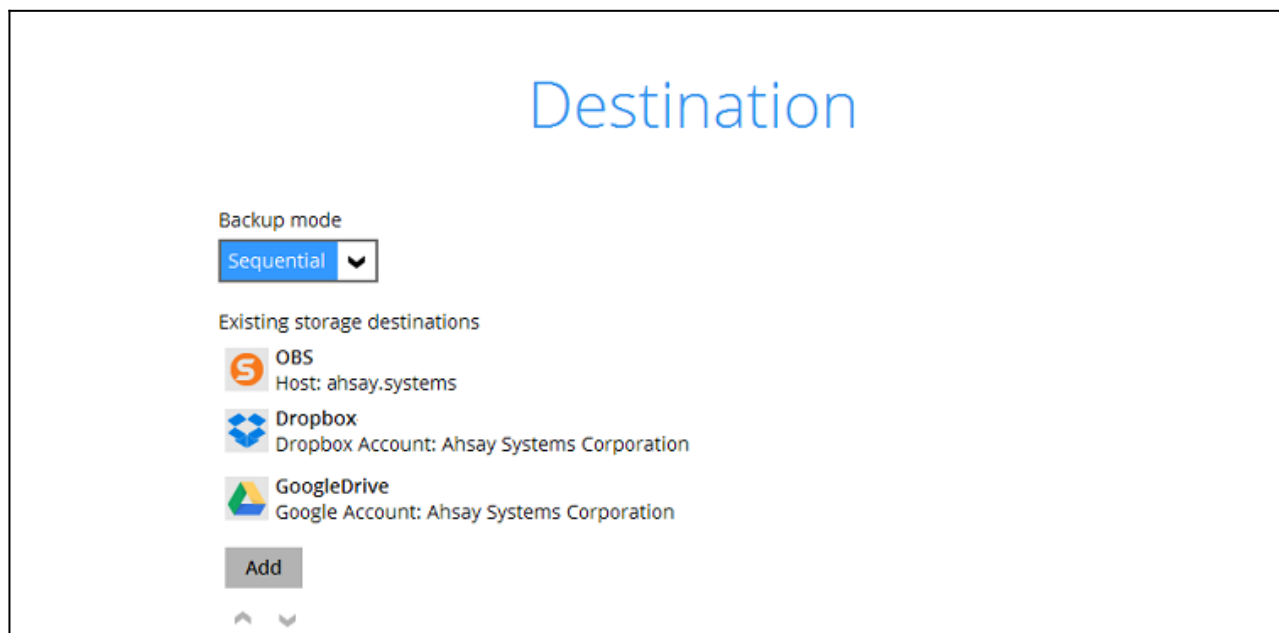


6. Click **OK** afterward.
7. Click **Add new storage destination / destination pool** to add the cloud storage destination.

## Destination



**Important:** It is strongly recommended that all backup sets are configured to backup to multiple backup destinations, to provide user with data redundancy and backup / restore flexibility.



For more details on Backup Destination, you can refer to the following KB article: [FAQ: Frequently Asked Questions on Backup Destination](#)

8. Continue by configuring a backup schedule and encryption setting for the backup set.
9. Click the **Backup now** button to start the initial backup job, or allow the job to start at its scheduled time.

**Important:** It is important to perform restore test to ensure your backup is setup and performed properly. Performing restore test can also help identify potential issues or gaps in your recovery plan.

## Keywords

exchange, mapi, maillevel, mail, level, brick

From:  
<https://wiki.ahsay.com/> - Ahsay Wiki

Permanent link:  
[https://wiki.ahsay.com/doku.php?id=public:5011\\_faq:how\\_to\\_create\\_a\\_ms\\_exchange\\_mail\\_level\\_backup\\_set\\_with\\_ahsayobm\\_ms\\_exchange\\_2013&rev=1583748131](https://wiki.ahsay.com/doku.php?id=public:5011_faq:how_to_create_a_ms_exchange_mail_level_backup_set_with_ahsayobm_ms_exchange_2013&rev=1583748131)

Last update: 2020/03/09 18:02